

Anti-CA19-9 (SLea) antibody [121SLE] (STJ16100279)

STJ16100279

GENERAL INFORMATION

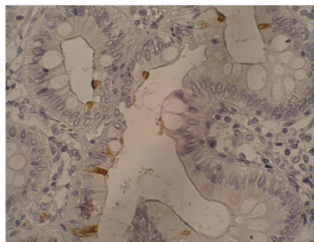
Product Type	Primary antibodies
Short Description	Mouse monoclonal antibody anti-CA19-9 (SLea) is suitable for use in ELISA, Flow Cytometry and Immunohistochemistry research applications.
Applications	ELISA/FC/IHC
Host/Source	Mouse
Reactivity	Human

PRODUCT PROPERTIES

Clonality	Monoclonal
Clone ID	121SLE
Concentration	Can be provided as 100 µg/mL, 500 µg/mL or 1mg/mL.
Conjugation	Unconjugated
Purification	Affinity purified from tissue culture.
Dilution Range	ELISA (solid phase: 0, 1-100 µg/ml; tracer: 0, 001-100 µg/ml for 30 min at RT). Flow cytometry (0.5-1.0 µg/million cells in 0.1ml). Immunohistology (1-2 µg/ml for 30 min at RT).
Formulation	PBS with 0.02% Sodium Azide.
Isotype	IgMk
Storage	Store for up to 1 year at 2-8°C upon receipt.
Instruction	

TARGET INFORMATION

Gene ID	
Gene Symbol	
Uniprot ID	
Immunogen	A BALB/c mouse was immunized with ten precipitin lines obtained after immunodiffusion using mAb NS19-9 and mucins isolated from an ovarian cyst of a 0Lea+b-patient. Fusion partner: Sp2/0.
Immunogen Region	
Specificity	
Immunogen Sequence	



This product is suitable for in-vitro studies under the RESEARCH USE ONLY [RUO] licence. This product must not be used as for diagnostic or other medical purposes.
St John's Laboratory Ltd, Knowledge Dock Business Centre, University Way, London, E16 2RD | Tel: 0208 223 3081