

## Anti-Keratin 7 antibody [OVTL12/30] (STJ16100239)

STJ16100239

### GENERAL INFORMATION

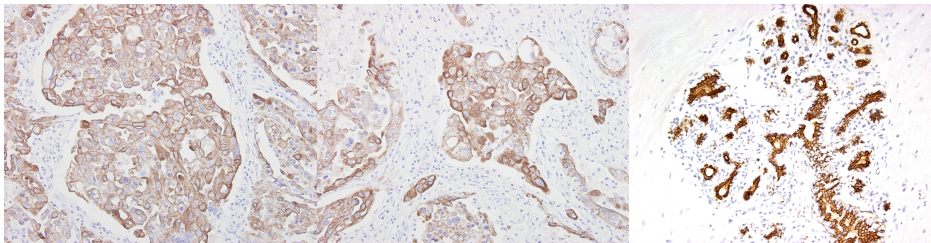
<b>Product Type</b>	Primary antibodies
<b>Short Description</b>	Mouse monoclonal antibody anti-Keratin 7 is suitable for use in Immunohistochemistry research applications.
<b>Applications</b>	IHC-P
<b>Host/Source</b>	Mouse
<b>Reactivity</b>	Human

### PRODUCT PROPERTIES

<b>Clonality</b>	Monoclonal
<b>Clone ID</b>	OVTL12/30
<b>Concentration</b>	100 ug/mL
<b>Conjugation</b>	Unconjugated
<b>Purification</b>	
<b>Dilution Range</b>	WB 1:10
<b>Formulation</b>	PBS with 0.1% BSA and 0.02% sodium azide
<b>Isotype</b>	IgG1
<b>Storage Instruction</b>	Store at 2-8°C upon receipt.

### TARGET INFORMATION

<b>Gene ID</b>	<a href="#">3855</a>
<b>Gene Symbol</b>	<a href="#">KRT7</a>
<b>Uniprot ID</b>	<a href="#">K2C7_HUMAN</a>
<b>Immunogen</b>	Cytoskeletal preparation of OTN-11 ovarian carcinoma cell line
<b>Immunogen Region</b>	
<b>Specificity</b>	
<b>Immunogen Sequence</b>	



This product is suitable for in-vitro studies under the RESEARCH USE ONLY [RUO] licence. This product must not be used as for diagnostic or other medical purposes.  
St John's Laboratory Ltd, Knowledge Dock Business Centre, University Way, London, E16 2RD | Tel: 0208 223 3081