

Anti-HLA-E antibody [MEM-E/06] (STJ16100204)

STJ16100204

GENERAL INFORMATION

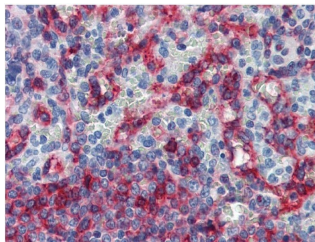
Product Type	Primary antibodies
Short Description	Mouse monoclonal antibody anti-HLA-E is suitable for use in Flow Cytometry, Immunoprecipitation and Immunohistochemistry research applications.
Applications	FC/IP/IHC-P
Host/Source	Mouse
Reactivity	Non-Human Primates/Human

PRODUCT PROPERTIES

Clonality	Monoclonal
Clone ID	MEM-E/06
Concentration	1 mg/mL
Conjugation	Unconjugated
Purification	
Dilution Range	
Formulation	Phosphate buffered saline (PBS) solution with 15 mM sodium azide
Isotype	IgG1
Storage	Store at 2-8°C upon receipt.
Instruction	

TARGET INFORMATION

Gene ID	3133
Gene Symbol	HLA-E
Uniprot ID	HLAE_HUMAN
Immunogen	Bacterially expressed recombinant HLA-E refolded with beta2-microglobulin and peptide.
Immunogen	
Region	
Specificity	
Immunogen	
Sequence	



This product is suitable for in-vitro studies under the RESEARCH USE ONLY [RUO] licence. This product must not be used as for diagnostic or other medical purposes.
St John's Laboratory Ltd, Knowledge Dock Business Centre, University Way, London, E16 2RD | Tel: 0208 223 3081