

Anti-Beta-2 microglobulin antibody [B2M-01] (STJ16100027)

STJ16100027

GENERAL INFORMATION

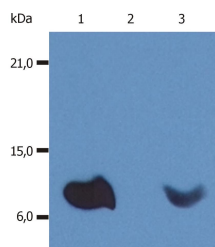
Product Type	Primary antibodies
Short Description	Mouse monoclonal antibody anti-Beta-2 microglobulin is suitable for use in Flow Cytometry, Immunoprecipitation, Western Blot, Immunohistochemistry, Immunocytochemistry and ELISA research applications.
Applications	FC/IP/WB/IHC-P/ICC/ELISA
Host/Source	Mouse
Reactivity	Human

PRODUCT PROPERTIES

Clonality	Monoclonal
Clone ID	B2M-01
Concentration	1 mg/mL
Conjugation	Unconjugated
Purification	
Dilution Range	FC 0 5-1 0 µg/million cells in 0 1 mL-WB 2-4 µg/mL-ELISA to be determined-IHC paraffin Recommended
Formulation	Phosphate buffered saline (PBS) solution with 15 mM sodium azide
Isotype	IgG2a
Storage Instruction	Store at 2-8°C upon receipt.

TARGET INFORMATION

Gene ID	
Gene Symbol	
Uniprot ID	
Immunogen	Purified human beta2-microglobulin
Immunogen Region	
Specificity	
Immunogen Sequence	



This product is suitable for in-vitro studies under the RESEARCH USE ONLY [RUO] licence. This product must not be used as for diagnostic or other medical purposes.
St John's Laboratory Ltd, Knowledge Dock Business Centre, University Way, London, E16 2RD | Tel: 0208 223 3081