

## Anti-tdTomato antibody (STJ140278)

STJ140278

### GENERAL INFORMATION

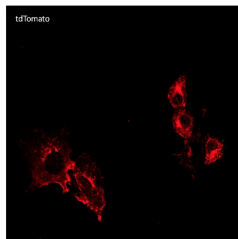
<b>Product Type</b>	Primary antibodies
<b>Short Description</b>	Goat polyclonal antibody anti-tdTomato is suitable for use in Western Blot, Immunohistochemistry, Immunofluorescence and Immune Electron Microscopy research applications.
<b>Applications</b>	WB/IHC-F/IHC-P/IF/IEM
<b>Host/Source</b>	Goat
<b>Reactivity</b>	tdTomato/mCherry/RFP

### PRODUCT PROPERTIES

<b>Clonality</b>	Polyclonal
<b>Clone ID</b>	
<b>Concentration</b>	2 mg/mL
<b>Conjugation</b>	Unconjugated
<b>Purification</b>	Epitope affinity purified
<b>Dilution Range</b>	WB 1:500-1:5000 IHC-F 1:50-1:500 IHC-P 1:50-1:500 IF 1:50-1:500 IEM 1:50-1:500
<b>Formulation</b>	NaHCO <sub>3</sub> 100 mM pH 9.
<b>Isotype</b>	IgG
<b>Storage</b>	For continuous use, store at 2-8 C for one-two days. For extended storage, store in -20 C freezer. Working dilution samples should be discarded if not used within 12 hours.
<b>Instruction</b>	

### TARGET INFORMATION

<b>Gene ID</b>	
<b>Gene Symbol</b>	
<b>Uniprot ID</b>	
<b>Immunogen</b>	Purified recombinant peptide produced in E. coli.
<b>Immunogen Region</b>	
<b>Specificity</b>	In 293HEK cells transfected with cds plasmid detects a band of 54 kDa by Western blot. It also detects tdTomato in brain sections by IHC. This antibody is specific for tdTomato and mCherry proteins. It does not cross-react to GFP (green fluorescent p
<b>Immunogen Sequence</b>	



Immunofluorescence à anti-tdTomato antibody using hCEC cells transduced with tdTomato-CAV1; cells were fixed with methanol and anti-tdTomato at 1/250

This product is suitable for in-vitro studies under the RESEARCH USE ONLY [RUO] licence. This product must not be used as for diagnostic or other medical purposes.  
St John's Laboratory Ltd, Knowledge Dock Business Centre, University Way, London, E16 2RD | Tel: 0208 223 3081