

## Anti-mRuby antibody (STJ140251)

STJ140251

### GENERAL INFORMATION

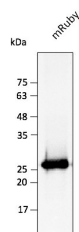
|                          |   |
|--------------------------|---|
| <b>Product Type</b>      | Primary antibodies  |
| <b>Short Description</b> | Goat polyclonal antibody anti-mRuby is suitable for use in Western Blot, Immunohistochemistry, Immunofluorescence and Immune Electron Microscopy research applications. |
| <b>Applications</b>      | WB/IHC-F/IHC-P/IF/IEM   |
| <b>Host/Source</b>       | Goat  |
| <b>Reactivity</b>        | RFP   |

### PRODUCT PROPERTIES

|                       |  |
|-----------------------|--|
| <b>Clonality</b>      | Polyclonal   |
| <b>Clone ID</b>       |  |
| <b>Concentration</b>  | 3 mg/mL  |
| <b>Conjugation</b>    | Unconjugated   |
| <b>Purification</b>   | Epitope affinity purified  |
| <b>Dilution Range</b> | WB 1:500-1:5000<br>IHC-F 1:50-1:500<br>IHC-P 1:50-1:500<br>IF 1:50-1:500<br>IEM 1:50-1:500   |
| <b>Formulation</b>    |  |
| <b>Isotype</b>        | IgG  |
| <b>Storage</b>        | For continuous use, store at 2-8 C for one-two days. For extended storage, store in -20 C freezer. Working dilution samples should be discarded if not used within 12 hours. |
| <b>Instruction</b>    |  |

### TARGET INFORMATION

|                           |  |
|---------------------------|--|
| <b>Gene ID</b>            |  |
| <b>Gene Symbol</b>        |  |
| <b>Uniprot ID</b>         |  |
| <b>Immunogen</b>          | Affinity purified recombinant fluorescent protein (HIR78_01785 from Bacillus subtilis) and produced in E. coli.                        |
| <b>Immunogen Region</b>   |  |
| <b>Specificity</b>        | In lysates of transfected cells with the plasmid containing the fluorescent sequence, detects the recombinant protein by Western blot. |
| <b>Immunogen Sequence</b> |  |



Anti-mRuby antibody at 1/2, 500 dilution using HEK293 transfected cell lysates at 50  $\mu$ g per lane; rabbit polyclonal to goat IgG (HRP) at 1:10000 dilution

This product is suitable for in-vitro studies under the RESEARCH USE ONLY [RUO] licence. This product must not be used as for diagnostic or other medical purposes.  
St John's Laboratory Ltd, Knowledge Dock Business Centre, University Way, London, E16 2RD | Tel: 0208 223 3081