

Anti-mCardinal antibody (STJ140229)

STJ140229

GENERAL INFORMATION

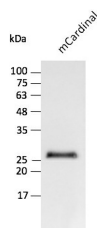
Product Type	Primary antibodies
Short Description	Goat polyclonal antibody anti-mCardinal is suitable for use in Western Blot, Immunohistochemistry, Immunofluorescence and Immune Electron Microscopy research applications.
Applications	WB/IHC-F/IHC-P/IF/IEM
Host/Source	Goat
Reactivity	Far-RFP

PRODUCT PROPERTIES

Clonality	Polyclonal
Clone ID	
Concentration	3 mg/mL
Conjugation	Unconjugated
Purification	Epitope affinity purified
Dilution Range	WB 1:500-1:5000 IHC-F 1:50-1:500 IHC-P 1:50-1:500 IF 1:50-1:500 IEM 1:50-1:500
Formulation	PBS, 20% Glycerol and 0.05% Sodium Azide.
Isotype	IgG
Storage	For continuous use, store at 2-8 C for one-two days. For extended storage, store in -20 C freezer. Working dilution samples should be discarded if not used within 12 hours.
Instruction	

TARGET INFORMATION

Gene ID	
Gene Symbol	
Uniprot ID	
Immunogen	Affinity purified recombinant fluorescent protein (HIR78_01785 from Bacillus subtilis) and produced in E. coli.
Immunogen Region	
Specificity	In lysates of transfected cells with the plasmid containing the fluorescent sequence, detects the recombinant protein by Western blot.
Immunogen Sequence	



Anti-mCardinal antibody at 1/2, 500 dilution using HEK293 transfected cell lysates at 40 Aug per lane; rabbit polyclonal to goat IgG (HRP) at 1:10000 dilution

This product is suitable for in-vitro studies under the RESEARCH USE ONLY [RUO] licence. This product must not be used as for diagnostic or other medical purposes.
St John's Laboratory Ltd, Knowledge Dock Business Centre, University Way, London, E16 2RD | Tel: 0208 223 3081