

Anti-Sapphire antibody (STJ140225)

STJ140225

GENERAL INFORMATION

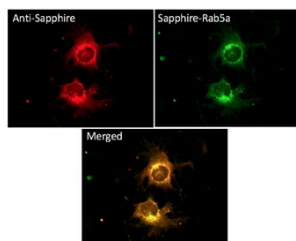
Product Type	Primary antibodies
Short Description	Goat polyclonal antibody anti-Sapphire is suitable for use in Western Blot, Immunohistochemistry, Immunofluorescence and Immune Electron Microscopy research applications.
Applications	WB/IHC-F/IHC-P/IF/IEM
Host/Source	Goat
Reactivity	GFP

PRODUCT PROPERTIES

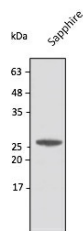
Clonality	Polyclonal
Clone ID	
Concentration	3 mg/mL
Conjugation	Unconjugated
Purification	Epitope affinity purified
Dilution Range	WB 1:500-1:5000 IHC-F 1:50-1:500 IHC-P 1:50-1:500 IF 1:50-1:500 IEM 1:50-1:500
Formulation	PBS, 20% Glycerol and 0.05% Sodium Azide.
Isotype	IgG
Storage	For continuous use, store at 2-8 C for one-two days. For extended storage, store in -20 C freezer. Working dilution samples should be discarded if not used within 12 hours.
Instruction	

TARGET INFORMATION

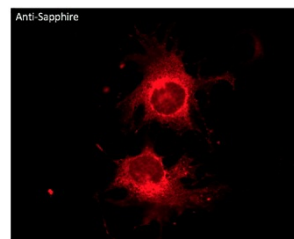
Gene ID	
Gene Symbol	
Uniprot ID	
Immunogen	Purified recombinant fluorescent protein produced in E. coli.
Immunogen Region	
Specificity	In 293HEK cells transfected with cds plasmid detects a band of 27 kDa by Western blot. This antibody does not recognize RFP (red fluorescent protein).
Immunogen Sequence	



Immunofluorescence à anti-Sapphire antibody using NIH3T3 cells transfected with Sapphire-Rab5a; cells were fixed with methanol and anti-Sapphire at 1:100



Anti-Sapphire antibody at 1/2, 500 dilution; 293HEK cells transfected with Sapphire, lysates at 50 µg per lane; rabbit polyclonal to goat IgG (HRP) at 1:10000 dilution



Immunofluorescence à anti-Sapphire antibody using NIH3T3 cells transfected with Sapphire-Rab5a; cells were fixed with methanol and anti-Sapphire at 1:100