

## Chicken Anti-Goat IgG (Full length) antibody {DyLight®633} (STJ140224)

STJ140224

### GENERAL INFORMATION

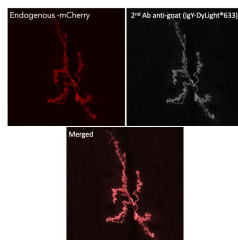
<b>Product Type</b>	Secondary antibodies
<b>Short Description</b>	DyLight®633-conjugated chicken polyclonal anti-Goat IgG Full length secondary antibody. For use in most research applications.
<b>Applications</b>	WB/IF
<b>Host/Source</b>	Chicken
<b>Reactivity</b>	Goat

### PRODUCT PROPERTIES

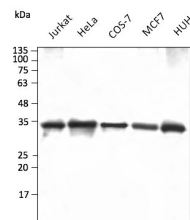
<b>Clonality</b>	Polyclonal
<b>Clone ID</b>	
<b>Concentration</b>	2 mg/mL
<b>Conjugation</b>	DyLight®633
<b>Purification</b>	Epitope affinity purified
<b>Dilution Range</b>	WB 1:2000-1:10000 IF 1:100-1:1000
<b>Formulation</b>	PBS, 20% Glycerol, 0.05% ProClin® and 0.05% Sodium Azide.
<b>Isotype</b>	IgY
<b>Storage</b>	For continuous use, store at 2-8 C for one-two days. For extended storage, store in -20 C freezer. Working dilution samples should be discarded if not used within 12 hours.
<b>Instruction</b>	

### TARGET INFORMATION

<b>Gene ID</b>	
<b>Gene Symbol</b>	
<b>Uniprot ID</b>	
<b>Immunogen</b>	Full goat IgG affinity purified from domestic goat (Capra hircus) serum using protein G. Purity >95% by SDS-PAGE.
<b>Immunogen Region</b>	Full length
<b>Specificity</b>	Using serum samples detects goat IgG by Western blot. Reduced cross-reactivity to other species.
<b>Immunogen Sequence</b>	



Immunofluorescence in Drosophila larvae NMJ muscle 6/7 expressing mCherry in neurons (DyLight®633) using 1st antibody anti-mCherry at 1:1000 and 2nd antibody anti-goat IgY conjugated to DyLight®633 at 1/500



Anti-GAPDH antibody at 1/2, 500 dilution using HEK293 transfected cell lysates at 50 µg per lane; chicken polyclonal to goat IgG conjugated to DyLight® 633 (STJ140224) at 1:10000 dilution

This product is suitable for in-vitro studies under the RESEARCH USE ONLY [RUO] licence. This product must not be used as for diagnostic or other medical purposes.  
St John's Laboratory Ltd, Knowledge Dock Business Centre, University Way, London, E16 2RD | Tel: 0208 223 3081