

Anti-RFP antibody {DyLight®488} (STJ140208)

STJ140208

GENERAL INFORMATION

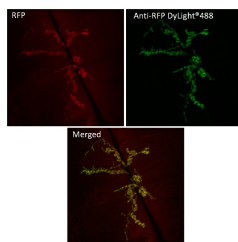
Product Type	Primary antibodies
Short Description	Goat polyclonal antibody anti-RFP is suitable for use in Western Blot, Immunohistochemistry and Immunofluorescence research applications.
Applications	WB/IHC-F/IF
Host/Source	Goat
Reactivity	RFP/mCherry/mOrange/mPlum/mRFP/mStrawberry/tdTomato

PRODUCT PROPERTIES

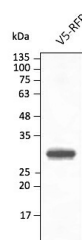
Clonality	Polyclonal
Clone ID	
Concentration	2 mg/mL
Conjugation	DyLight®488
Purification	Epitope affinity purified
Dilution Range	WB 1:500-1:2000 IHC-F 1:50-1:1000 IF 1:50-1:500
Formulation	PBS, 20% Glycerol, 0.05% ProClin® and 0.05% Sodium Azide.
Isotype	IgG
Storage	For continuous use, store at 2-8 C for one-two days. For extended storage, store in -20 C freezer. Working dilution samples should be discarded if not used within 12 hours.
Instruction	

TARGET INFORMATION

Gene ID	
Gene Symbol	
Uniprot ID	
Immunogen	Purified recombinant RFP peptide produced in E. coli.
Immunogen Region	
Specificity	In 293HEK cells transfected with cds plasmid detects a band of 29 kDa by Western blot. This antibody also recognizes very well tdTomato and does not cross-react to GFP (green fluorescent protein).
Immunogen Sequence	



Immunofluorescence in *Drosophila* larvae NMJ expressing RFP in neurons (DyLight®488), muscle 6/7 using anti-RFP conjugated to DyLight®488 at 1/500



Anti-RFP antibody conjugated to DyLight®488 at 1/2, 500 dilution using HEK293 transfected cell lysates at 50 µg per lane

This product is suitable for in-vitro studies under the RESEARCH USE ONLY [RUO] licence. This product must not be used as for diagnostic or other medical purposes.
St John's Laboratory Ltd, Knowledge Dock Business Centre, University Way, London, E16 2RD | Tel: 0208 223 3081