

Anti-Miranda antibody (220 aa N-Term) (STJ140173)

GENERAL INFORMATION

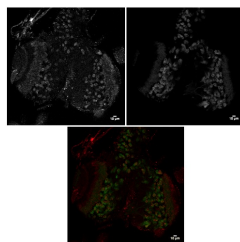
| | |
|--------------------------|---|
| Product Type | Primary antibodies |
| Short Description | Goat polyclonal antibody anti-Miranda (220 aa N-Term) is suitable for use in Western Blot and Immunofluorescence research applications. |
| Applications | WB/IF |
| Host/Source | Goat |
| Reactivity | D.melanogaster |

PRODUCT PROPERTIES

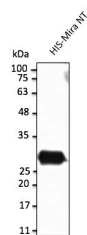
| | |
|----------------------|--|
| Clonality | Polyclonal |
| Clone ID | |
| Concentration | 3 mg/mL |
| Conjugation | Unconjugated |
| Purification | Epitope affinity purified |
| Dilution | WB 1:500-1:2000 |
| Range | IF 1:50-1:500 |
| Formulation | PBS, 20% Glycerol and 0.05% Sodium Azide. |
| Isotype | IgG |
| Storage | For continuous use, store at 2-8 C for one-two days. For extended storage, store in -20 C freezer. Working dilution samples should be discarded if not used within 12 hours. |
| Instruction | |

TARGET INFORMATION

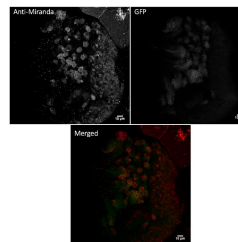
| | |
|---------------------------|---|
| Gene ID | |
| Gene Symbol | |
| Uniprot ID | |
| Immunogen | Recombinant peptide derived from within residues 220 aa to the N-terminus of Drosophila melanogaster Miranda produced in E. coli. |
| Immunogen Region | 220 aa N-Term |
| Specificity | Detects endogenous levels of Miranda protein by immunofluorescence. |
| Immunogen Sequence | MSFSKAKLKRFDNDVDAICG SPAASNSSAGSAGSATPTAS SAAAAPPTVQPERKEQIEKF FKDAVRFASSSKEAKEFAIP KEDKSKGKGLRFLRTPSLPQR LRFRTPSHTDTATGSGSGA STAASTPLHSAATTPVKEAK SASRLKGKEALQYEIRHKNE LIESQLSOLDVLRHVDQLK EAEAKLREEHELATSKTDRL IEALTSENLSHKALNE |



Immunofluorescence à anti-Miranda antibody in fly cells at 1:100 dilution; InsGAL4 UASCD8 GFP wandering L3; cells were fixed with 4% of PFA



Anti-Miranda antibody at 1:1,000 dilution; protein at 40 ng per lane; rabbit polyclonal to goat IgG (HRP) at 1:10000 dilution



Immunofluorescence à anti-Miranda antibody in fly cells at 1:100 dilution; InsGAL4 UASCD8 GFP wandering L3; cells were fixed with 4% of PFA

This product is suitable for in-vitro studies under the RESEARCH USE ONLY [RUO] licence. This product must not be used as for diagnostic or other medical purposes.
St John's Laboratory Ltd, Knowledge Dock Business Centre, University Way, London, E16 2RD | Tel: 0208 223 3081