

Anti-PTK2 antibody (690aa C-Term) (STJ140154)

STJ140154

GENERAL INFORMATION

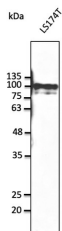
| | |
|--------------------------|---|
| Product Type | Primary antibodies |
| Short Description | Goat polyclonal antibody anti-Focal adhesion kinase 1 (690aa C-Term) is suitable for use in Western Blot research applications. |
| Applications | WB |
| Host/Source | Goat |
| Reactivity | Human/Rat/Mouse/Monkey/Canine |

PRODUCT PROPERTIES

| | |
|----------------------------|---|
| Clonality | Polyclonal |
| Clone ID | |
| Concentration | 3 mg/mL |
| Conjugation | Unconjugated |
| Purification | This antibody is epitope-affinity purified from goat antiserum. |
| Dilution Range | WB 1:500-1:2000 |
| Formulation | PBS, 20% Glycerol and 0.05% Sodium Azide. |
| Isotype | IgG |
| Storage Instruction | Store at -20 C for long-term storage. Store at 2-8 C for up to one month. |

TARGET INFORMATION

| | |
|---------------------------|---|
| Gene ID | 5747 |
| Gene Symbol | PTK2 |
| Uniprot ID | FAK1_HUMAN |
| Immunogen | Recombinant peptide derived from within residues 690 aa to the C-terminus of human PTK2 produced in E. coli. |
| Immunogen Region | 690aa C-Term |
| Specificity | Detects endogenous levels of PTK2 by Western blot. |
| Immunogen Sequence | MRMESRRQATVSWDSGGSD E APPKPSRPGYSPRSSEGFY PSPQHVMQTNHYQVSGYPGS HGITAMAGSIYPGQASLLDQ TDSWNHRPQEIAMWQPNVED STVLDLRGIGQVLPHTLMEE RLIRQQQEMEEDQRWLEKEE RFLKPDVRLSRGSDREDGS LQGPIGNQHIYQPVGKPDPA APPKKPPRPGAPGHLGSLAS LSSPADSYNEGVLQPQEIS PPPTANLDRSNDKVYENV |



Anti-PTK2 antibody at 1:1000 dilution; lysates at 50 Åug per lane; rabbit polyclonal to goat IgG (HRP) at 1:10000 dilution

This product is suitable for in-vitro studies under the RESEARCH USE ONLY [RUO] licence. This product must not be used as for diagnostic or other medical purposes.
St John's Laboratory Ltd, Knowledge Dock Business Centre, University Way, London, E16 2RD | Tel: 0208 223 3081