

Anti-STUB1 antibody (STJ140143)

STJ140143

GENERAL INFORMATION

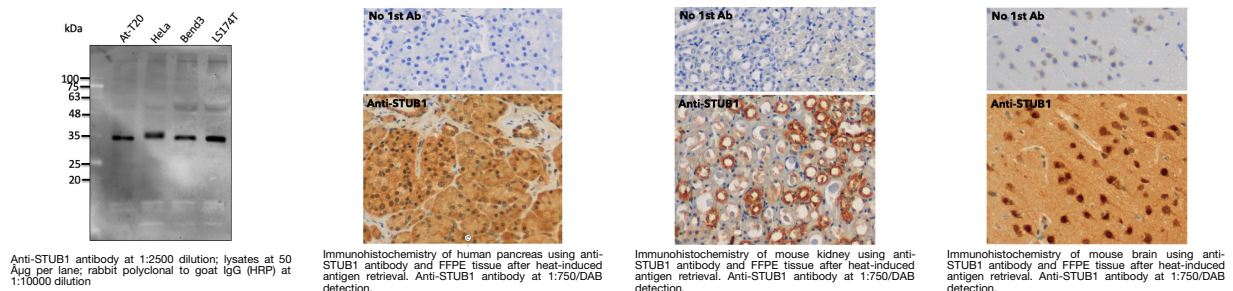
Product Type	Primary antibodies
Short Description	Goat polyclonal antibody anti-STIP1 homology and U-box containing protein 1, E3 ubiquitin protein ligase is suitable for use in Western Blot, Immunohistochemistry and Immunohistochemistry research applications.
Applications	WB/IHC-F/IHC-P
Host/Source	Goat
Reactivity	Human/Rat/Mouse/Monkey/Canine

PRODUCT PROPERTIES

Clonality	Polyclonal
Clone ID	
Concentration	3 mg/mL
Conjugation	Unconjugated
Purification	This antibody is epitope-affinity purified from goat antiserum.
Dilution Range	WB 1:500-1:5000 IHC-F 1:250-1:1000 IHC-P 1:250-1:1000
Formulation	PBS, 20% Glycerol and 0.05% Sodium Azide.
Isotype	IgG
Storage Instruction	For continuous use, store at 2-8 C for one-two days. For extended storage, store in -20 C freezer. Working dilution samples should be discarded if not used within 12 hours.

TARGET INFORMATION

Gene ID	10273
Gene Symbol	STUB1
Uniprot ID	CHIP_HUMAN
Immunogen	Purified recombinant human STUB1 protein produced in E. coli.
Immunogen Region	
Specificity	Detects endogenous levels of STUB1 by Western blot.
Immunogen Sequence	MKGKEEKEGGARLGAGGGSP EKSPSAQELKEQGNRLFVGR KYPEAAACYGRAITRNPLVA VYYTNRALCYLKMQQHEQAL ADCRRALELDGQSVKAHFFL GQCQLEMESYDEAIAQLQRA YSLAKEQRLNFGDDIPSALR IAKKKRWNSIEERRIHQESE LHSLYLRLLAAERERELEEC QRNHEGDEDDSHVRAQQACI EAKHDKYMADMDELFSQVDE KRKKRDIPDYLCGKISFEL



This product is suitable for in-vitro studies under the RESEARCH USE ONLY [RUO] licence. This product must not be used as for diagnostic or other medical purposes.
St John's Laboratory Ltd, Knowledge Dock Business Centre, University Way, London, E16 2RD | Tel: 0208 223 3081