

Anti-INSR antibody (1310aa C-Term) (STJ140127)

STJ140127

GENERAL INFORMATION

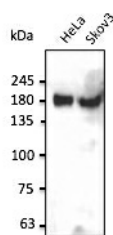
Product Type	Primary antibodies
Short Description	Goat polyclonal antibody anti-Insulin receptor (1310aa C-Term) is suitable for use in Western Blot, Immunohistochemistry and Immunohistochemistry research applications.
Applications	WB/IHC-F/IHC-P
Host/Source	Goat
Reactivity	Human/Rat/Mouse/Monkey/Canine

PRODUCT PROPERTIES

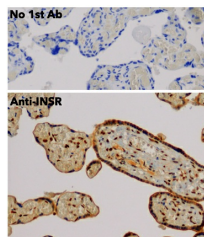
Clonality	Polyclonal
Clone ID	
Concentration	3 mg/mL
Conjugation	Unconjugated
Purification	This antibody is epitope-affinity purified from goat antiserum.
Dilution Range	WB 1:500-1:5000 IHC-F 1:250-1:1000 IHC-P 1:250-1:1000
Formulation	PBS, 20% Glycerol and 0.05% Sodium Azide.
Isotype	IgG
Storage	For continuous use, store at 2-8 C for one-two days. For extended storage, store in -20 C freezer. Working dilution samples should be discarded if not used within 12 hours.
Instruction	

TARGET INFORMATION

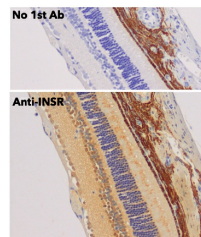
Gene ID	3643
Gene Symbol	INSR
Uniprot ID	INSR_HUMAN
Immunogen	Purified recombinant peptide within residues 1310 aa to the C-terminus of human INSR produced in E. coli.
Immunogen Region	1310aa C-Term
Specificity	Using liver, HeLa and Skov3 cell lysates detects a 180 kDa band by Western blot.
Immunogen Sequence	KAPESEELEMEFEDMENVPL DRSSHCQREEAGGRDGGSSL GFKRSYEEHIPYTHMNGGKK NGRILTLPRSNPS



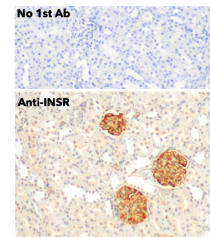
Endogenous INSR detected at 1:2500 dilution; lysate at 50 µg per lane and rabbit polyclonal to goat IgG (HRP) at 1:10000 dilution.



Immunohistochemistry of human placenta using anti-INSR antibody and FFPE tissue after heat-induced antigen retrieval. Anti-INSR antibody at 1:750/DAB detection.



Immunohistochemistry of mouse retina using anti-INSR antibody and FFPE tissue after heat-induced antigen retrieval. Anti-INSR antibody at 1:750/DAB detection.



Immunohistochemistry of mouse kidney using anti-INSR antibody and FFPE tissue after heat-induced antigen retrieval. Anti-INSR antibody at 1:750/DAB detection.