

Anti-CDH11 antibody (752aa C-Term) (STJ140122)

STJ140122

GENERAL INFORMATION

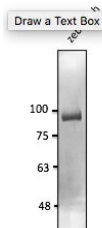
| | |
|--------------------------|--|
| Product Type | Primary antibodies |
| Short Description | Goat polyclonal antibody anti-Cadherin 11, type2, OB-cadherin (osteoblast) (752aa C-Term) is suitable for use in Western Blot research applications. |
| Applications | WB |
| Host/Source | Goat |
| Reactivity | Zebrafish |

PRODUCT PROPERTIES

| | |
|-----------------------|--|
| Clonality | Polyclonal |
| Clone ID | |
| Concentration | 3 mg/mL |
| Conjugation | Unconjugated |
| Purification | This antibody is epitope-affinity purified from goat antiserum. |
| Dilution Range | WB 1:500-1:2000 |
| Formulation | PBS, 20% Glycerol and 0.05% Sodium Azide. |
| Isotype | IgG |
| Storage | For continuous use, store at 2-8 C for one-two days. For extended storage, store in -20 C freezer. Working dilution samples should be discarded if not used within 12 hours. |
| Instruction | |

TARGET INFORMATION

| | |
|---------------------------|--|
| Gene ID | |
| Gene Symbol | |
| Uniprot ID | |
| Immunogen | Purified recombinant peptide derived from within residues 752 aa to the C-terminus of CDH11 produced in E. coli. |
| Immunogen Region | 752aa C-Term |
| Specificity | Detects endogenous levels of total CDH11 protein in the whole 3-day embryo lysates by Western blot. |
| Immunogen Sequence | |



Endogenous CDH11 detected at 1:2000 dilution; lysate of 3 day embryo at 50 µg per lane and rabbit polyclonal to goat IgG (HRP) at 1:10000 dilution

This product is suitable for in-vitro studies under the RESEARCH USE ONLY [RUO] licence. This product must not be used as for diagnostic or other medical purposes.
St John's Laboratory Ltd, Knowledge Dock Business Centre, University Way, London, E16 2RD | Tel: 0208 223 3081