

Anti-RFP antibody (STJ140119)

STJ140119

GENERAL INFORMATION

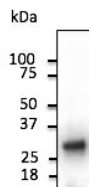
Product Type	Primary antibodies
Short Description	Goat polyclonal antibody anti-Red Fluorescent Protein is suitable for use in Western Blot, Immunohistochemistry, Immunofluorescence and ELISA research applications.
Applications	WB/IHC-F/IHC-P/IF/ELISA
Host/Source	Goat
Reactivity	Transfected cells

PRODUCT PROPERTIES

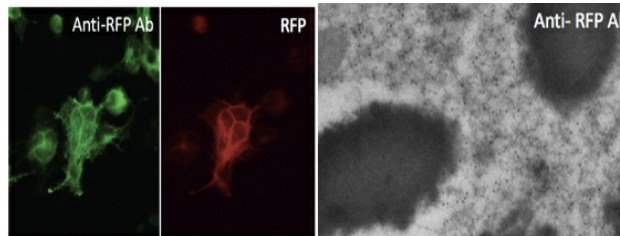
Clonality	Polyclonal
Clone ID	
Concentration	3 mg/mL
Conjugation	Unconjugated
Purification	This antibody is epitope-affinity purified from goat antiserum.
Dilution Range	WB 1:500-1:2000 IHC-F 1:50-1:500 IHC-P 1:50-1:500 IF 1:50-1:500 ELISA ND Tan Z Kong M Wen S et al. J Bone Miner Res 2020 Jul. PMID: 32662900 Endo T Kadoya K Suzuki Y et al. Front Cell Neurosci 2019 Jun. PMID: 31316351 Jian
Formulation	PBS, 20% Glycerol and 0.05% Sodium Azide.
Isotype	IgG
Storage	For continuous use, store at 2-8 C for one-two days. For extended storage, store in -20 C freezer. Working dilution samples should be discarded if not used within 12 hours.
Instruction	

TARGET INFORMATION

Gene ID	
Gene Symbol	
Uniprot ID	
Immunogen	Purified recombinant RFP peptide produced in E. coli.
Immunogen Region	
Specificity	In 293HEK cells transfected with cds plasmid detects a band of 29 kDa by Western blot. This antibody also recognizes very well tdTomato and does not cross-react to GFP (green fluorescent protein).
Immunogen Sequence	



Anti-RFP antibody at 1:2000 dilution; 293HEK cells transfected with RFP Ad; lysates at 50 µg per lane; rabbit polyclonal to goat IgG (HRP) at 1:10000 dilution



Immunofluorescence à anti-RFP antibody in 293HEK cells transfected with RFP at 1:50 dilution; cells were fixed with 4% of PFA

Immunogold labeling of epithelium cells, in vivo injected with RFP expressing vector

This product is suitable for in-vitro studies under the RESEARCH USE ONLY [RUO] licence. This product must not be used as for diagnostic or other medical purposes.
St John's Laboratory Ltd, Knowledge Dock Business Centre, University Way, London, E16 2RD | Tel: 0208 223 3081