

Anti-YFP antibody (STJ140118)

STJ140118

GENERAL INFORMATION

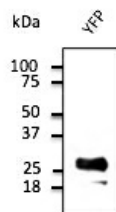
Product Type	Primary antibodies
Short Description	Goat polyclonal antibody anti-Yellow Fluorescent Protein is suitable for use in Western Blot, Immunohistochemistry, Immunofluorescence and Immune Electron Microscopy research applications.
Applications	WB/IHC-F/IHC-P/IF/IEM
Host/Source	Goat
Reactivity	Transfected cells

PRODUCT PROPERTIES

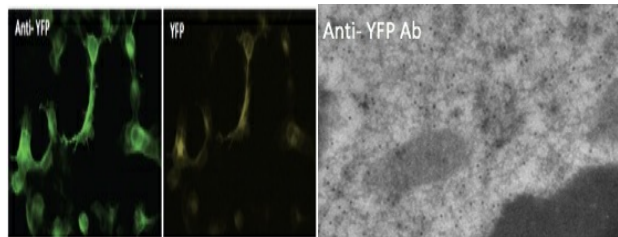
Clonality	Polyclonal
Clone ID	
Concentration	3 mg/mL
Conjugation	Unconjugated
Purification	This antibody is epitope-affinity purified from goat antiserum.
Dilution Range	WB 1:500-1:2000 IHC-F 1:50-1:1000 IHC-P 1:50-1:1000 IF 1:50-1:1000 IEM 1:50-1:1000
Formulation	PBS, 20% Glycerol and 0.05% Sodium Azide.
Isotype	IgG
Storage	For continuous use, store at 2-8 C for one-two days. For extended storage, store in -20 C freezer. Working dilution samples should be discarded if not used within 12 hours.
Instruction	

TARGET INFORMATION

Gene ID	
Gene Symbol	
Uniprot ID	
Immunogen	Purified recombinant peptide produced in E. coli.
Immunogen Region	
Specificity	In 293HEK cells transfected with cds plasmid detects a band of 27 kDa by Western blot. This antibody also recognizes GFP and does not recognize mCherry/red fluorescent protein.
Immunogen Sequence	



Anti-YFP antibody at 1:2000 dilution; 293HEK cells transfected with YFP Ad; lysates at 50 µg per lane; rabbit polyclonal to goat IgG (HRP) at 1:10000 dilution



Immunofluorescence to anti-YFP antibody in 293HEK cells transfected with YFP at 1:50 dilution; cells were fixed with 4% of PFA

Immunogold labeling of epithelium cells, in vivo injected with YFP expressing vector