

Anti-ERBB2 antibody (1177aa C-Term) (STJ140115)

STJ140115

GENERAL INFORMATION

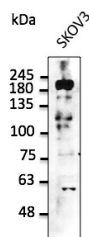
Product Type	Primary antibodies
Short Description	Goat polyclonal antibody anti-Erb-b2 receptor tyrosine kinase (1177aa C-Term) is suitable for use in Western Blot, Immunohistochemistry and Immunohistochemistry research applications.
Applications	WB/IHC-F/IHC-P
Host/Source	Goat
Reactivity	Human/Rat/Mouse/Monkey/Canine

PRODUCT PROPERTIES

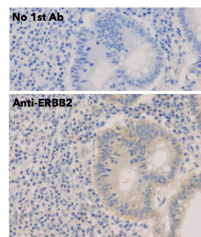
Clonality	Polyclonal
Clone ID	
Concentration	3 mg/mL
Conjugation	Unconjugated
Purification	This antibody is epitope-affinity purified from goat antiserum.
Dilution Range	WB 1:500-1:5000 IHC-F 1:250-1:1000 IHC-P 1:250-1:1000
Formulation	PBS, 20% Glycerol and 0.05% Sodium Azide.
Isotype	IgG
Storage	For continuous use, store at 2-8 C for one-two days. For extended storage, store in -20 C freezer. Working dilution samples should be discarded if not used within 12 hours.
Instruction	

TARGET INFORMATION

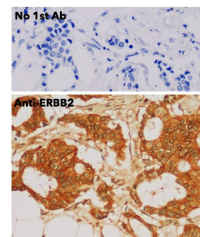
Gene ID	2064
Gene Symbol	ERBB2
Uniprot ID	ERBB2_HUMAN
Immunogen	Purified recombinant peptide derived from within residues 1, 177 aa to the C-terminus of human ERBB2 produced in E. coli.
Immunogen Region	1177aa C-Term
Specificity	Detects endogenous levels of ERBB2 by Western blot.
Immunogen Sequence	MPHPPPAFSPAFDNLYYWDQ DPPERGAPPSTFKGTPTAEN PEYLGLDVPV



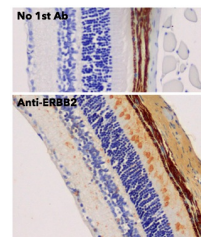
Anti-ERBB2 antibody at 1:2500 dilution; 50 Åg of total protein per lane; rabbit polyclonal to goat IgG (HRP) at 1:10000 dilution



Immunohistochemistry of human appendix using anti-ERBB2 antibody and FFPE tissue after heat-induced antigen retrieval. Anti-ERBB2 antibody at 1:500/DAB detection.



Immunohistochemistry of human breast carcinoma using anti-ERBB2 antibody and FFPE tissue after heat-induced antigen retrieval. Anti-ERBB2 antibody at 1:500/DAB detection.



Immunohistochemistry of rat eye using anti-ERBB2 antibody and FFPE tissue after heat-induced antigen retrieval. Anti-ERBB2 antibody at 1:500/DAB detection.

This product is suitable for in-vitro studies under the RESEARCH USE ONLY [RUO] licence. This product must not be used as for diagnostic or other medical purposes.
St John's Laboratory Ltd, Knowledge Dock Business Centre, University Way, London, E16 2RD | Tel: 0208 223 3081