

Anti-INS antibody (STJ140105)

STJ140105

GENERAL INFORMATION

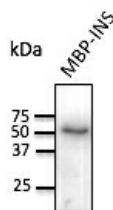
Product Type	Primary antibodies
Short Description	Goat polyclonal antibody anti-Insulin is suitable for use in Western Blot, Immunohistochemistry and Immunohistochemistry research applications.
Applications	WB/IHC-F/IHC-P
Host/Source	Goat
Reactivity	Human/Rat/Mouse/Monkey/Canine

PRODUCT PROPERTIES

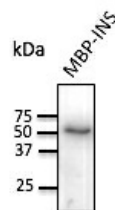
Clonality	Polyclonal
Clone ID	
Concentration	3 mg/mL
Conjugation	Unconjugated
Purification	This antibody is epitope-affinity purified from goat antiserum.
Dilution Range	WB 1:250-1:2000 IHC-F 1:250-1:1000 IHC-P 1:250-1:1000
Formulation	PBS, 20% Glycerol and 0.05% Sodium Azide.
Isotype	IgG
Storage	For continuous use, store at 2-8 C for one-two days. For extended storage, store in -20 C freezer. Working dilution samples should be discarded if not used within 12 hours.
Instruction	

TARGET INFORMATION

Gene ID	3630
Gene Symbol	INS
Uniprot ID	INS_HUMAN
Immunogen	Purified recombinant human Insulin produced in E. coli as a fusion protein.
Immunogen Region	
Specificity	Gives a positive signal using MBP-Insulin recombinant fusion protein by WB.
Immunogen Sequence	MFVNQHLCGSHLVEALYLVC GERGFFYTPKTGIVEQCCTS ICSLYQLENYCN



Anti-INS antibody at 1:1000 dilution; 20 ng of recombinant protein per lane; rabbit polyclonal to goat IgG (HRP) at 1:10000 dilution



Anti-INS antibody at 1/1,000 dilution; 20 ng of recombinant protein per lane; rabbit polyclonal to goat IgG (HRP) at 1/10,000 dilution

This product is suitable for in-vitro studies under the RESEARCH USE ONLY [RUO] licence. This product must not be used as for diagnostic or other medical purposes.
St John's Laboratory Ltd, Knowledge Dock Business Centre, University Way, London, E16 2RD | Tel: 0208 223 3081