

Anti-RAB5A antibody (115aa C-Term) (STJ140104)

STJ140104

GENERAL INFORMATION

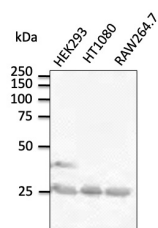
Product Type	Primary antibodies
Short Description	Goat polyclonal antibody anti-RAB5A, member RAS oncogene family (115aa C-Term) is suitable for use in Western Blot and Immunofluorescence research applications.
Applications	WB/IF
Host/Source	Goat
Reactivity	Human/Rat/Mouse/Monkey/Canine

PRODUCT PROPERTIES

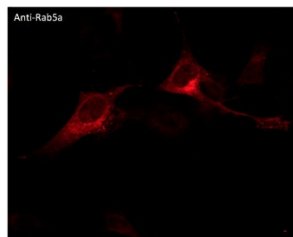
Clonality	Polyclonal
Clone ID	
Concentration	4 mg/mL
Conjugation	Unconjugated
Purification	This antibody is epitope-affinity purified from goat antiserum.
Dilution Range	WB 1:250-1:2000 IF 1:100-1:500 1. Cardoso MHS PhD Thesis NOVA University of Lisbon Portugal 2018
Formulation	PBS, 20% Glycerol and 0.05% Sodium Azide.
Isotype	IgG
Storage	For continuous use, store at 2-8 C for one-two days. For extended storage, store in -20 C freezer. Working dilution samples should be discarded if not used within 12 hours.
Instruction	

TARGET INFORMATION

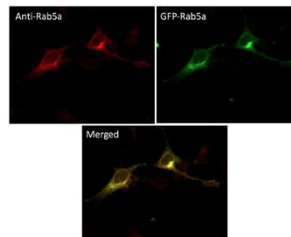
Gene ID	5868
Gene Symbol	RAB5A
Uniprot ID	RAB5A_HUMAN
Immunogen	Purified recombinant peptide derived from within residues 115 aa to the C-terminus of mouse Rab5a produced in E. coli.
Immunogen Region	115aa C-Term
Specificity	Detects Rab5a protein by Western blot in cell lysates and transfected cells with GFP-Rab5a. This Ab is specific for Rab5a; it does not recognize Rab5b and Rab5c.
Immunogen Sequence	



Anti-Rab5a antibody at 1:500 dilution; lysates at 100 µg per lane; rabbit polyclonal to goat IgG (HRP) at 1:10000 dilution



Immunofluorescence à anti-Rab5a antibody using NIH3T3 cells transfected with GFP-Rab5a; cells were fixed with methanol and anti-Rab5a at 1:100



Immunofluorescence à anti-Rab5a antibody using NIH3T3 cells transfected with GFP-Rab5a; cells were fixed with methanol and anti-Rab5a at 1:100

This product is suitable for in-vitro studies under the RESEARCH USE ONLY [RUO] licence. This product must not be used as for diagnostic or other medical purposes.
St John's Laboratory Ltd, Knowledge Dock Business Centre, University Way, London, E16 2RD | Tel: 0208 223 3081