

Anti-MERSC CoV Spike Protein antibody (381-505aa Spike Receptor BD) (STJ140102)

STJ140102

GENERAL INFORMATION

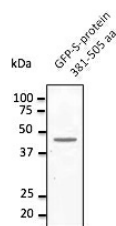
Product Type	Primary antibodies
Short Description	Goat polyclonal antibody anti-MERSC CoV Spike Protein (381-505aa Spike Receptor BD) is suitable for use in Western Blot research applications.
Applications	WB
Host/Source	Goat
Reactivity	Transfected cells

PRODUCT PROPERTIES

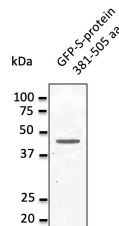
Clonality	Polyclonal
Clone ID	
Concentration	3 mg/mL
Conjugation	Unconjugated
Purification	This antibody is epitope-affinity purified from goat antiserum.
Dilution Range	WB 1:500-1:2000 Cho H Jang Y Park KH et al. NPJ Vaccines. 2021 Mar PMID: 33741992 Chun J Cho Y Park KH et al. J Microbiol Biotechnol. 2019 May PMID: 30982320
Formulation	PBS, 20% Glycerol and 0.05% Sodium Azide.
Isotype	IgG
Storage	For continuous use, store at 2-8 C for one-two days. For extended storage, store in -20 C freezer. Working dilution samples should be discarded if not used within 12 hours.
Instruction	

TARGET INFORMATION

Gene ID	
Gene Symbol	
Uniprot ID	
Immunogen	Purified recombinant peptide derived from within residues 381-505 aa (Spike receptor binding domain) of Spike protein from Middle East respiratory syndrome coronavirus produced in E. coli.
Immunogen Region	381-505aa Spike Receptor BD
Specificity	Detects MERSC-CoV Spike (receptor binding domain) recombinant fusion proteins (MBP-S-protein and GFP-S-protein).
Immunogen Sequence	VECDFSPLLSGTPPQVYNFK RLVFTNCNLYNLTKLLSLFSV NDFTCSPAAIASNCYSS LILDYFSYPLSMKSDLVSS AGPISQFNFKQSFNSPTCLI LATVPHNLTTITKPLKYSYI NKCSR



Anti-MERSC-CoV Spike Protein antibody at 1:1000 dilution; HEK293 transfected cell lysates at 30 Aug per lane; rabbit polyclonal to goat IgG (HRP) at 1:10000 dilution.



Anti-MERSC-CoV Spike Protein antibody at 1/1,000 dilution; HEK293 transfected cell lysates at 30 Aug per lane; rabbit polyclonal to goat IgG (HRP) at 1/10,000 dilution.

This product is suitable for in-vitro studies under the RESEARCH USE ONLY [RUO] licence. This product must not be used as for diagnostic or other medical purposes.
St John's Laboratory Ltd, Knowledge Dock Business Centre, University Way, London, E16 2RD | Tel: 0208 223 3081