

Anti-Esp1 antibody (STJ140097)

STJ140097

GENERAL INFORMATION

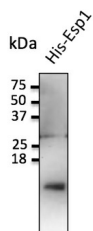
Product Type	Primary antibodies
Short Description	Goat polyclonal antibody anti-Esp1 is suitable for use in Western Blot research applications.
Applications	WB
Host/Source	Goat
Reactivity	Mouse

PRODUCT PROPERTIES

Clonality	Polyclonal
Clone ID	
Concentration	4 mg/mL
Conjugation	Unconjugated
Purification	This antibody is epitope-affinity purified from goat antiserum.
Dilution Range	WB 1:500-1:2000 Rating Review 2021-02-06 10:26:33 Ab works on WB Question 2021-02-06 10:46:03 Can I buy 1 mg? Answer Yes you can. Question 2021-02-06 10:33:41 Which dilution should be used for WB? Answer should be used 1:1000
Formulation	PBS, 20% Glycerol and 0.05% Sodium Azide.
Isotype	IgG
Storage	For continuous use, store at 2-8 C for one-two days. For extended storage, store in -20 C freezer. Working dilution samples should be discarded if not used within 12 hours.
Instruction	

TARGET INFORMATION

Gene ID	
Gene Symbol	
Uniprot ID	
Immunogen	Purified full recombinant protein produced in E. coli.
Immunogen Region	
Specificity	Detects the recombinant protein Esp1 by Western blot.
Immunogen Sequence	



Anti-Esp1 antibody at 1:1000 dilution; 20 ng of recombinant protein per lane; rabbit polyclonal to goat IgG (HRP) at 1:10000 dilution

This product is suitable for in-vitro studies under the RESEARCH USE ONLY [RUO] licence. This product must not be used as for diagnostic or other medical purposes.
St John's Laboratory Ltd, Knowledge Dock Business Centre, University Way, London, E16 2RD | Tel: 0208 223 3081