

## Anti-KDR antibody (20-125aa) (STJ140092)

STJ140092

### GENERAL INFORMATION

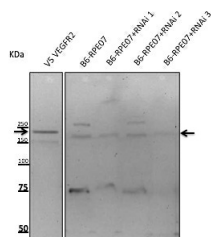
<b>Product Type</b>	Primary antibodies
<b>Short Description</b>	Goat polyclonal antibody anti-Kinase insert receptor (a type III receptor tyrosine kinase) (20-125aa) is suitable for use in Western Blot and Immunofluorescence research applications.
<b>Applications</b>	WB/IF
<b>Host/Source</b>	Goat
<b>Reactivity</b>	Human/Rat/Mouse/Monkey

### PRODUCT PROPERTIES

<b>Clonality</b>	Polyclonal
<b>Clone ID</b>	
<b>Concentration</b>	3 mg/mL
<b>Conjugation</b>	Unconjugated
<b>Purification</b>	This antibody is epitope-affinity purified from goat antiserum.
<b>Dilution Range</b>	WB 1:500-1:2000 IF 1:25-1:250 Cardoso MHS PhD Thesis NOVA University of Lisbon Portugal 2018
<b>Formulation</b>	PBS, 20% Glycerol and 0.05% Sodium Azide.
<b>Isotype</b>	IgG
<b>Storage</b>	For continuous use, store at 2-8 C for one-two days. For extended storage, store in -20 C freezer. Working dilution samples should be discarded if not used within 12 hours.
<b>Instruction</b>	

### TARGET INFORMATION

<b>Gene ID</b>	3791
<b>Gene Symbol</b>	KDR
<b>Uniprot ID</b>	VGFR2_HUMAN
<b>Immunogen</b>	Purified recombinant peptide derived from the N-terminus (residues 20-125 aa) of human VEGFR2 produced in E. coli.
<b>Immunogen Region</b>	20-125aa
<b>Specificity</b>	This antibody reacts with a 180 kDa protein and detects endogenous levels of total VEGFR2 protein.
<b>Immunogen Sequence</b>	



Anti-VEGFR2 antibody at 1:500 dilution; lysates at 50 µg per lane; rabbit polyclonal to goat IgG (HRP) at 1:10000 dilution