

Anti-RAB27A antibody (120aa C-Term) (STJ140074)

STJ140074

GENERAL INFORMATION

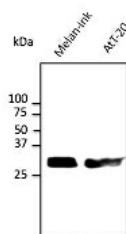
Product Type	Primary antibodies
Short Description	Goat polyclonal antibody anti-RAB27, member RAS oncogene family (120aa C-Term) is suitable for use in Western Blot, Immunohistochemistry, Immunofluorescence and ELISA research applications.
Applications	WB/IHC-F/IHC-P/IF/ELISA
Host/Source	Goat
Reactivity	Human/Rat/Mouse/Monkey/Canine

PRODUCT PROPERTIES

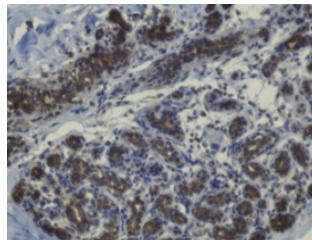
Clonality	Polyclonal
Clone ID	
Concentration	3 mg/mL
Conjugation	Unconjugated
Purification	This antibody is epitope-affinity purified from goat antiserum.
Dilution Range	WB 1:500-1:2000 IHC-F 1:50-1:400 IHC-P 1:50-1:400 IF 1:50-1:250 ELISA ND
Formulation	Ferreira JV Soares AR Ramalho J et al. Sci Adv 2022 Mar PMID: 35333565 Ferreira JV Rosa Soares A Ramalho JS et al. PLoS One 2019 Oct. PMID: 31613922 PBS, 20% Glycerol and 0.05% Sodium Azide.
Isotype	IgG
Storage	For continuous use, store at 2-8 C for one-two days. For extended storage, store in -20 C freezer. Working dilution samples should be discarded if not used within 12 hours.
Instruction	

TARGET INFORMATION

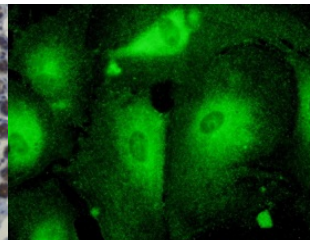
Gene ID	5873
Gene Symbol	RAB27A
Uniprot ID	RB27A_HUMAN
Immunogen	Purified recombinant peptide derived from within residues 120 aa to the C-terminus of mouse Rab27a and rab27b produced in E. coli.
Immunogen Region	120aa C-Term
Specificity	Detects total Rab27 levels by Western blot in the following human, rat and mouse whole cell lysates and transfected cells with GFP-Rab27a and GFP-Rab27b cds.
Immunogen Sequence	



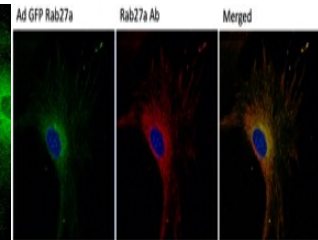
Anti-Rab27 pan antibody at 1:500 dilution 50 Åg of total protein per lane rabbit polyclonal to goat IgG (HRP) at 1:10000 dilution



Anti-Rab27a antibody Immunohistochemistry staining of human mammary tissue. Immunohistochemistry of formalin-fixed, paraffin-embedded tissue after heat-induced antigen retrieval antibody concentration 1:200



Immunostaining of primary RPE cells with Rab27 antibody (1:50)



This product is suitable for in-vitro studies under the RESEARCH USE ONLY [RUO] licence. This product must not be used as for diagnostic or other medical purposes.
St John's Laboratory Ltd, Knowledge Dock Business Centre, University Way, London, E16 2RD | Tel: 0208 223 3081