

Anti-RAB25 antibody (120aa C-Term) (STJ140073)

STJ140073

GENERAL INFORMATION

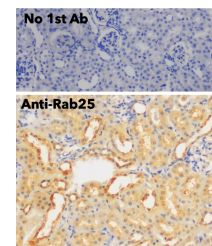
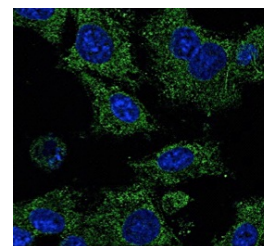
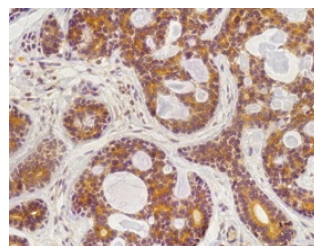
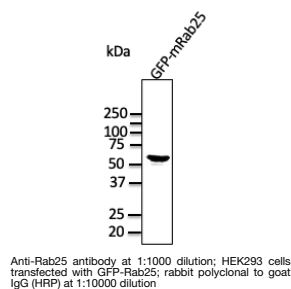
Product Type	Primary antibodies
Short Description	Goat polyclonal antibody anti-RAB25, member RAS oncogene family (120aa C-Term) is suitable for use in Western Blot, Immunohistochemistry and Immunofluorescence research applications.
Applications	WB/IHC-F/IHC-P/IF
Host/Source	Goat
Reactivity	Human/Rat/Mouse/Monkey/Canine

PRODUCT PROPERTIES

Clonality	Polyclonal
Clone ID	
Concentration	2 mg/mL
Conjugation	Unconjugated
Purification	This antibody is epitope-affinity purified from goat antiserum.
Dilution Range	WB 1:250-1:2000 IF 1:25-1:250 IHC-P 1:200-1:1:1000 IHC-F 1:200-1:1:1000
Formulation	PBS, 20% Glycerol and 0.05% Sodium Azide.
Isotype	IgG
Storage	For continuous use, store at 2-8 C for one-two days. For extended storage, store in -20 C freezer. Working dilution samples should be discarded if not used within 12 hours.
Instruction	

TARGET INFORMATION

Gene ID	57111
Gene Symbol	RAB25
Uniprot ID	RAB25_HUMAN
Immunogen	Purified recombinant peptide derived from within residues 120 aa to the C-terminus of mouse Rab25 produced in E. coli.
Immunogen Region	120aa C-Term
Specificity	Detects Rab25 by Western blot in transfected cells with GFP-Rab25.
Immunogen Sequence	MIVVMLVGNKSDLQAREVP TEEACMFAENGLLFLETSALDSTNVELAFQTVLKEIFAK VSKQKQNSTRTSAILGNAQ AGQDPGPGKEKRACCISL



This product is suitable for in-vitro studies under the RESEARCH USE ONLY [RUO] licence. This product must not be used as for diagnostic or other medical purposes.
St John's Laboratory Ltd, Knowledge Dock Business Centre, University Way, London, E16 2RD | Tel: 0208 223 3081