

Anti-RAB11A antibody (110aa C-Term) (STJ140067)

STJ140067

GENERAL INFORMATION

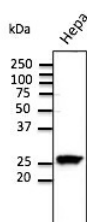
Product Type	Primary antibodies
Short Description	Goat polyclonal antibody anti-RAB11, member RAS oncogene family (110aa C-Term) is suitable for use in Western Blot, Immunohistochemistry and Immunohistochemistry research applications.
Applications	WB/IHC-F/IHC-P
Host/Source	Goat
Reactivity	Human/Rat/Mouse/Monkey/Canine

PRODUCT PROPERTIES

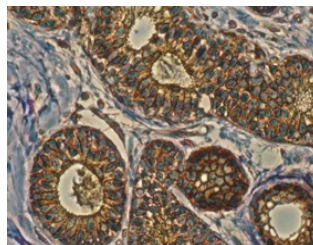
Clonality	Polyclonal
Clone ID	
Concentration	3 mg/mL
Conjugation	Unconjugated
Purification	This antibody is epitope-affinity purified from goat antiserum.
Dilution Range	WB 1:250-1:2000 IHC-F 1:100-1:400 IHC-P 1:100-1:400 Deissler HL Sommer K Lang GK et al. Exp Eye Res 2020 Jul PMID: 32712182 Deissler HL Lang GK and Lang GE. Graefes Arch Clin Exp Ophthalmol 2018 Oct. PMID: 30367290
Formulation	PBS, 20% Glycerol and 0.05% Sodium Azide.
Isotype	IgG
Storage	For continuous use, store at 2-8 C for one-two days. For extended storage, store in -20 C freezer. Working dilution samples should be discarded if not used within 12 hours.
Instruction	

TARGET INFORMATION

Gene ID	8766
Gene Symbol	RAB11A
Uniprot ID	RB11A_HUMAN
Immunogen	Purified recombinant peptides derived from within residues 110 aa to the C-terminus of mouse Rab11a, Rab11b and Rab11c (Rab25) produced in E. coli.
Immunogen Region	110aa C-Term
Specificity	Detects levels of Rab11 by Western blot in the following human, rat and mouse whole cell lysates and transfected cells with GFP-Rab11a, GFP-Rab11b and GFP-Rab11c (Rab25) cds.
Immunogen Sequence	



Anti-Rab11 antibody at 1:500 dilution; Hepa cell line lysates at 100 µg per lane; rabbit polyclonal to goat IgG (HRP) at 1:10000 dilution



Anti-Rab11 antibody immunohistochemistry staining of human mammary tissue; immunohistochemistry of formalin-fixed, paraffin-embedded tissue after heat-induced antigen retrieval; antibody concentration 1:200

This product is suitable for in-vitro studies under the RESEARCH USE ONLY [RUO] licence. This product must not be used as for diagnostic or other medical purposes.
St John's Laboratory Ltd, Knowledge Dock Business Centre, University Way, London, E16 2RD | Tel: 0208 223 3081