

## Anti-RAB5B antibody (115aa C-Term) (STJ140061)

STJ140061

### GENERAL INFORMATION

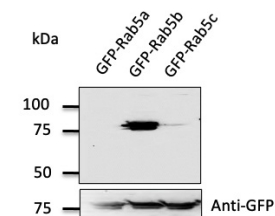
<b>Product Type</b>	Primary antibodies
<b>Short Description</b>	Goat polyclonal antibody anti-RAB5B, member RAS oncogene family (115aa C-Term) is suitable for use in Western Blot, Immunohistochemistry and Immunofluorescence research applications.
<b>Applications</b>	WB/IHC-F/IHC-P/IF
<b>Host/Source</b>	Goat
<b>Reactivity</b>	Human/Rat/Mouse/Monkey/Canine

### PRODUCT PROPERTIES

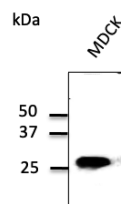
<b>Clonality</b>	Polyclonal
<b>Clone ID</b>	
<b>Concentration</b>	4 mg/mL
<b>Conjugation</b>	Unconjugated
<b>Purification</b>	This antibody is epitope-affinity purified from goat antiserum.
<b>Dilution Range</b>	WB 1:250-1:1000 IF 1:50-1:250 IHC-F 1:100-1:500 IHC-P 1:100-1:500 Cardoso MHS PhD Thesis NOVA University of Lisbon Portugal 2018
<b>Formulation</b>	PBS, 20% Glycerol and 0.05% Sodium Azide.
<b>Isotype</b>	IgG
<b>Storage</b>	For continuous use, store at 2-8 C for one-two days. For extended storage, store in -20 C freezer. Working dilution samples should be discarded if not used within 12 hours.
<b>Instruction</b>	

### TARGET INFORMATION

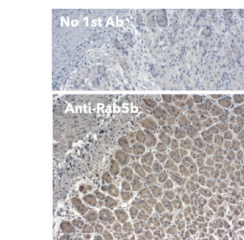
<b>Gene ID</b>	5869
<b>Gene Symbol</b>	RAB5B
<b>Uniprot ID</b>	RAB5B_HUMAN
<b>Immunogen</b>	Purified recombinant peptide derived from within residues 115 aa to the C-terminus of mouse Rab5b produced in E. coli.
<b>Immunogen Region</b>	115aa C-Term
<b>Specificity</b>	Detects Rab5b protein by Western blot in cell lysates of transfected cells with GFP-Rab5b. This Ab is specific for Rab5b; it does not recognize Rab5a and Rab5c.
<b>Immunogen Sequence</b>	



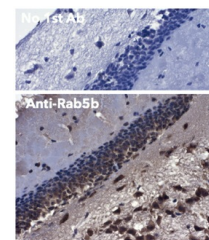
Anti-Rab5b antibody at 1:500 dilution, 293 cells transfected with GFP-Rab5 lysates at 50 µg per lane rabbit polyclonal to goat IgG (HRP) at 1:10000 dilution



Anti-Rab5b antibody at 1:500 dilution lysates at 50 µg per lane rabbit polyclonal to goat IgG (HRP) at 1:10000 dilution



Immunohistochemistry of mouse stomach using anti-Rab5b antibody and FFPE tissue after heat-induced antigen retrieval. Anti-Rab5b antibody at 1:500:DAB detection.



Immunohistochemistry of mouse retina using anti-Rab5b antibody and FFPE tissue after heat-induced antigen retrieval. Anti-Rab5b antibody at 1:500:DAB detection.

This product is suitable for in-vitro studies under the RESEARCH USE ONLY [RUO] licence. This product must not be used as for diagnostic or other medical purposes.  
St John's Laboratory Ltd, Knowledge Dock Business Centre, University Way, London, E16 2RD | Tel: 0208 223 3081