

## Anti-RAB5A antibody (115aa C-Term) (STJ140059)

STJ140059

### GENERAL INFORMATION

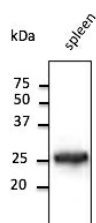
<b>Product Type</b>	Primary antibodies
<b>Short Description</b>	Goat polyclonal antibody anti-RAB5A, member RAS oncogene family (115aa C-Term) is suitable for use in Western Blot, Immunohistochemistry, Immunofluorescence and ELISA research applications.
<b>Applications</b>	WB/IHC-F/IHC-P/IF/ELISA
<b>Host/Source</b>	Goat
<b>Reactivity</b>	Human/Rat/Mouse/Monkey/Canine

### PRODUCT PROPERTIES

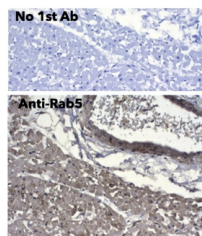
<b>Clonality</b>	Polyclonal
<b>Clone ID</b>	
<b>Concentration</b>	3 mg/mL
<b>Conjugation</b>	Unconjugated
<b>Purification</b>	This antibody is epitope-affinity purified from goat antiserum.
<b>Dilution</b>	WB 1:250-1:2000
<b>Range</b>	IHC-F 1:200-1:1000 IHC-P 1:200-1:1000 IF 1:50-1:250 ELISA ND
<b>Formulation</b>	Burrinha T Gomes R Terrasso AP et al. bioRxiv Apr 2019 Toneatti R Shin JM Shah UH et al. Sci Signal. 2020 Oct. PMID: 33082287 PBS, 20% Glycerol and 0.05% Sodium Azide.
<b>Isotype</b>	IgG
<b>Storage</b>	For continuous use, store at 2-8 C for one-two days. For extended storage, store in -20 C freezer. Working dilution samples should be discarded if not used within 12 hours.
<b>Instruction</b>	

### TARGET INFORMATION

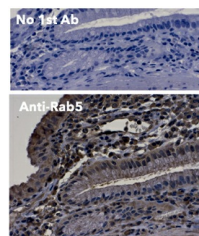
<b>Gene ID</b>	5868
<b>Gene Symbol</b>	RAB5A
<b>Uniprot ID</b>	RAB5A_HUMAN
<b>Immunogen</b>	Purified recombinant peptide derived from within residues 115 aa to the C-terminus of mouse Rab5a, Rab5b and rab5c produced in E. coli.
<b>Immunogen Region</b>	115aa C-Term
<b>Specificity</b>	Detects total Rab5 protein in the following human, rat and mouse whole cell lysates and transfected cells with GFP-Rab5a, GFP-Rab5b and GFP-Rab5c cds by Western blot.
<b>Immunogen Sequence</b>	



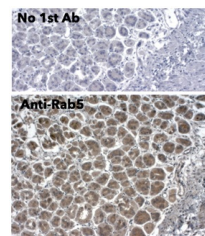
Anti-Rab5 antibody at 1:1000 dilution tissue lysate at 100 µg per lane Rabbit polyclonal to goat IgG (HRP) at 1:10000 dilution.



Immunohistochemistry of human myocardium using anti-Rab5 antibody and FFPE tissue after heat-induced antigen retrieval. Anti-Rab5 antibody at 1:100:DAB detection.



Immunohistochemistry of human gallbladder using anti-Rab5 antibody and FFPE tissue after heat-induced antigen retrieval. Anti-Rab5 antibody at 1:100:DAB detection.



Immunohistochemistry of mouse stomach using anti-Rab5 antibody and FFPE tissue after heat-induced antigen retrieval. Anti-Rab5 antibody at 1:500:DAB detection.

This product is suitable for in-vitro studies under the RESEARCH USE ONLY [RUO] licence. This product must not be used as for diagnostic or other medical purposes.  
St John's Laboratory Ltd, Knowledge Dock Business Centre, University Way, London, E16 2RD | Tel: 0208 223 3081