

## Anti-RAB2A antibody (110aa C-Term) (STJ140057)

STJ140057

### GENERAL INFORMATION

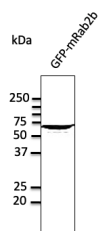
<b>Product Type</b>	Primary antibodies
<b>Short Description</b>	Goat polyclonal antibody anti-RAB2, member RAS oncogene family (110aa C-Term) is suitable for use in Western Blot research applications.
<b>Applications</b>	WB
<b>Host/Source</b>	Goat
<b>Reactivity</b>	Human/Rat/Mouse/Monkey/Canine

### PRODUCT PROPERTIES

<b>Clonality</b>	Polyclonal
<b>Clone ID</b>	
<b>Concentration</b>	2 mg/mL
<b>Conjugation</b>	Unconjugated
<b>Purification</b>	This antibody is epitope-affinity purified from goat antiserum.
<b>Dilution Range</b>	WB 1:250-1:2000
<b>Formulation</b>	PBS, 20% Glycerol and 0.05% Sodium Azide.
<b>Isotype</b>	IgG
<b>Storage</b>	For continuous use, store at 2-8 C for one-two days. For extended storage, store in -20 C freezer. Working dilution samples should be discarded if not used within 12 hours.
<b>Instruction</b>	

### TARGET INFORMATION

<b>Gene ID</b>	5862
<b>Gene Symbol</b>	RAB2A
<b>Uniprot ID</b>	RAB2A_HUMAN
<b>Immunogen</b>	Purified recombinant peptide derived from within residues 110 aa to the C-terminus of mouse Rab2b produced in E. coli.
<b>Immunogen Region</b>	110aa C-Term
<b>Specificity</b>	Detects total levels of Rab2 protein in transfected cells with GFP-Rab2a and GFP-Rab2b by Western blot.
<b>Immunogen Sequence</b>	



Anti-Rab2 Pan antibody at 1:1000 dilution; HEK293 cells transfected with GFP-Rab2b; lysates at 50 Aug per lane; rabbit polyclonal to goat IgG (HRP) at 1:10000 dilution

This product is suitable for in-vitro studies under the RESEARCH USE ONLY [RUO] licence. This product must not be used as for diagnostic or other medical purposes.  
St John's Laboratory Ltd, Knowledge Dock Business Centre, University Way, London, E16 2RD | Tel: 0208 223 3081