

Anti-RAB1A antibody (110aa C-Term) (STJ140056)

STJ140056

GENERAL INFORMATION

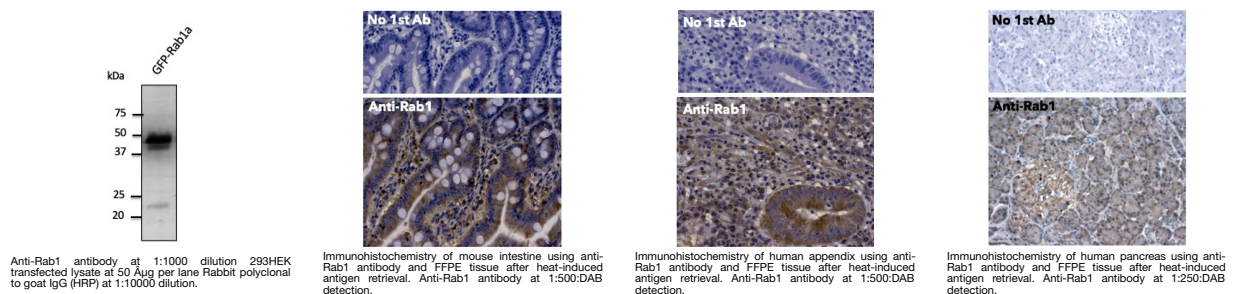
Product Type	Primary antibodies
Short Description	Goat polyclonal antibody anti-RAB1, member RAS oncogene family (110aa C-Term) is suitable for use in Western Blot, Immunohistochemistry, Immunofluorescence and ELISA research applications.
Applications	WB/IHC-F/IHC-P/IF/ELISA
Host/Source	Goat
Reactivity	Human/Rat/Mouse/Monkey/Canine

PRODUCT PROPERTIES

Clonality	Polyclonal
Clone ID	
Concentration	3 mg/mL
Conjugation	Unconjugated
Purification	This antibody is epitope-affinity purified from goat antiserum.
Dilution Range	WB 1:250-1:1000 IHC-F 1:250-1:1500 IHC-P 1:250-1:1500 IF 1:50-1:250 ELISA ND
Formulation	Mojallal M Zheng Y Hultin S et al. Nat Commun 2014 Aug 1:5:4557. PMID: 25080966
Isotype	PBS, 20% Glycerol and 0.05% Sodium Azide.
Storage	IgG
Instruction	For continuous use, store at 2-8 C for one-two days. For extended storage, store in -20 C freezer. Working dilution samples should be discarded if not used within 12 hours.

TARGET INFORMATION

Gene ID	5861
Gene Symbol	RAB1A
Uniprot ID	RAB1A_HUMAN
Immunogen	Purified recombinant peptides derived from within residues 110 aa to the C-terminus of mouse Rab1a and Rab1b produced in E. coli.
Region	110aa C-Term
Specificity	Detects total Rab1 protein by Western blot in the following human, rat and mouse whole cell lysates and transfected cells with GFP-Rab1a and Rab1a and GFP-Rab1b cds.
Immunogen Sequence	



This product is suitable for in-vitro studies under the RESEARCH USE ONLY [RUO] licence. This product must not be used as for diagnostic or other medical purposes.
St John's Laboratory Ltd, Knowledge Dock Business Centre, University Way, London, E16 2RD | Tel: 0208 223 3081