

Anti-TLR2 antibody (736aa C-Term) (STJ140050)

STJ140050

GENERAL INFORMATION

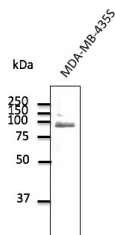
Product Type	Primary antibodies
Short Description	Goat polyclonal antibody anti-Toll-like receptor 2 (736aa C-Term) is suitable for use in Western Blot research applications.
Applications	WB
Host/Source	Goat
Reactivity	Human/Rat/Mouse/Monkey

PRODUCT PROPERTIES

Clonality	Polyclonal
Clone ID	
Concentration	3 mg/mL
Conjugation	Unconjugated
Purification	This antibody is epitope-affinity purified from goat antiserum.
Dilution Range	WB 1:500-1:2000
Formulation	PBS, 20% Glycerol and 0.05% Sodium Azide.
Isotype	IgG
Storage	For continuous use, store at 2-8 C for one-two days. For extended storage, store in -20 C freezer. Working dilution samples should be discarded if not used within 12 hours.
Instruction	

TARGET INFORMATION

Gene ID	7097
Gene Symbol	TLR2
Uniprot ID	TLR2_HUMAN
Immunogen	Purified recombinant peptide derived from within residues 736 aa to the C-terminus of human TLR2 produced in E. coli.
Immunogen Region	736aa C-Term
Specificity	Using liver, MDA-MD-435S and RAW264.7 cell lysates detects a band 85-90 kDa by Western blot.
Immunogen Sequence	



Anti-TLR2 antibody at 1:500 dilution; Rabbit polyclonal to goat IgG (HRP) at 1:10000 dilution.

This product is suitable for in-vitro studies under the RESEARCH USE ONLY [RUO] licence. This product must not be used as for diagnostic or other medical purposes.
St John's Laboratory Ltd, Knowledge Dock Business Centre, University Way, London, E16 2RD | Tel: 0208 223 3081