

Anti-RPS6 antibody (190aa C-Term) (STJ140049)

STJ140049

GENERAL INFORMATION

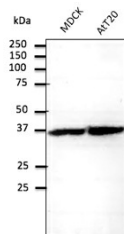
| | |
|--------------------------|---|
| Product Type | Primary antibodies |
| Short Description | Goat polyclonal antibody anti-Tibosomal protein S6 (190aa C-Term) is suitable for use in Western Blot and Immunofluorescence research applications. |
| Applications | WB/IF |
| Host/Source | Goat |
| Reactivity | Human/Rat/Mouse/Monkey/Canine |

PRODUCT PROPERTIES

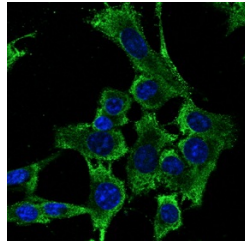
| | |
|-----------------------|--|
| Clonality | Polyclonal |
| Clone ID | |
| Concentration | 4 mg/mL |
| Conjugation | Unconjugated |
| Purification | This antibody is epitope-affinity purified from goat antiserum. |
| Dilution Range | WB 1:500-1:2000 IF 1:25-1:250 |
| Formulation | PBS, 20% Glycerol and 0.05% Sodium Azide. |
| Isotype | IgG |
| Storage | For continuous use, store at 2-8 C for one-two days. For extended storage, store in -20 C freezer. Working dilution samples should be discarded if not used within 12 hours. |
| Instruction | |

TARGET INFORMATION

| | |
|---------------------------|--|
| Gene ID | 6194 |
| Gene Symbol | RPS6 |
| Uniprot ID | RS6_HUMAN |
| Immunogen | Recombinant peptide derived from within residues 190 aa to the C-terminus of human RPS6 produced in E. |
| Immunogen Region | 190aa C-Term |
| Specificity | Detects a band of approximately 30 kDa by Western blot in the following whole cell lysates: MDCK, AtT20, Jurkat and 3T3. |
| Immunogen Sequence | |



Anti-RPS6 antibody at 1:500 dilution; lysates at 100 µg per lane; rabbit polyclonal to goat IgG (HRP) at 1:10000 dilution



Confocal immunofluorescence of Hepa1-6 cells with RPS6 antibody at 1:100 dilution; methanol fixation

This product is suitable for in-vitro studies under the RESEARCH USE ONLY [RUO] licence. This product must not be used as for diagnostic or other medical purposes.
St John's Laboratory Ltd, Knowledge Dock Business Centre, University Way, London, E16 2RD | Tel: 0208 223 3081