

Anti-GAPDH antibody (240aa C-Term) (STJ140037)

STJ140037

GENERAL INFORMATION

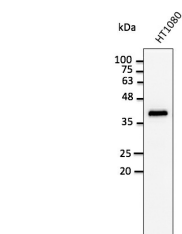
Product Type	Primary antibodies
Short Description	Goat polyclonal antibody anti-Glyceraldehyde-3-phosphate dehydrogenase (240aa C-Term) is suitable for use in Western Blot, Immunohistochemistry and Immunofluorescence research applications.
Applications	WB/IHC-F/IHC-P/IF
Host/Source	Goat
Reactivity	Human/Rat/Mouse/Monkey/Zebrafish/Canine

PRODUCT PROPERTIES

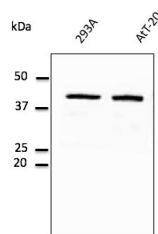
Clonality	Polyclonal
Clone ID	
Concentration	2 mg/mL
Conjugation	Unconjugated
Purification	This antibody is epitope-affinity purified from goat antiserum.
Dilution Range	WB 1:500-1:5000 IF 1:50-1:250 IHC-P 1:200-1:1000 IHC-F 1:200-1:1000 Cabaço LC Bento-Lopes L Neto MV et al. JID Innov 2022 Jun PMID: 36090299 Alzahofi N Robinson CL Welz T et al. bioRxiv 314153: May 2018 Ribeiro-Rodrigues TM Ca
Formulation	PBS, 20% Glycerol and 0.05% Sodium Azide.
Isotype	IgG
Storage	For continuous use, store at 2-8 C for one-two days. For extended storage, store in -20 C freezer. Working dilution samples should be discarded if not used within 12 hours.
Instruction	

TARGET INFORMATION

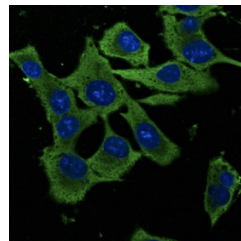
Gene ID	2597
Gene Symbol	GAPDH
Uniprot ID	G3P_HUMAN
Immunogen	Purified recombinant peptide derived from within residues 240 aa to the C-terminus of human GAPDH produced in E. coli.
Immunogen Region	240aa C-Term
Specificity	Detects a band of 37 kDa by Western blot in the following human (293A, HMEC-1, U-118, HaCat) , rat (TR-iBRB) , mouse (AtT-20, Hepa) , canine (D17) and monkey (COS-7) whole cell lysates.
Immunogen Sequence	SVVDLTCRLEKPAKYDDIKK VVKQASEGPKLGILGYTEHQ VVSSDFNSDTHSSTFDAGAG IALNDHFVKLISWYDNEFGY SNRVLDLMAHMASKE



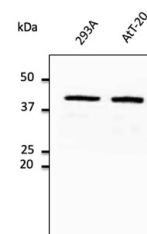
Anti-GAPDH antibody at 1:2500 dilution; lysates at 50 µg per lane; Rabbit polyclonal to goat IgG (HRP) at 1:10000 dilution



Anti-GAPDH antibody at 1:2500 dilution; lysates at 50 µg per lane; Rabbit polyclonal to goat IgG (HRP) at 1:10000 dilution



Immunofluorescence - anti-GAPDH antibody in Hepa1-6 cells at 1:50 dilution; cells were fixed with methanol



Anti-GAPDH antibody at 1/2, 500 dilution; lysates at 50 µg per lane; Rabbit polyclonal to goat IgG (HRP) at 1/10,000 dilution

This product is suitable for in-vitro studies under the RESEARCH USE ONLY [RUO] licence. This product must not be used as for diagnostic or other medical purposes.
St John's Laboratory Ltd, Knowledge Dock Business Centre, University Way, London, E16 2RD | Tel: 0208 223 3081