

## Anti-PDIA3 antibody (300aa C-Term) (STJ140036)

STJ140036

### GENERAL INFORMATION

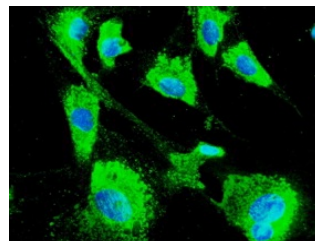
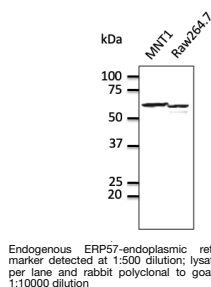
<b>Product Type</b>	Primary antibodies
<b>Short Description</b>	Goat polyclonal antibody anti-PDIA3 protein disulfide isomerase family A, member 3 (300aa C-Term) is suitable for use in Western Blot, Immunohistochemistry and Immunofluorescence research applications.
<b>Applications</b>	WB/IHC-F/IHC-P/IF
<b>Host/Source</b>	Goat
<b>Reactivity</b>	Human/Rat/Mouse/Monkey/Canine

### PRODUCT PROPERTIES

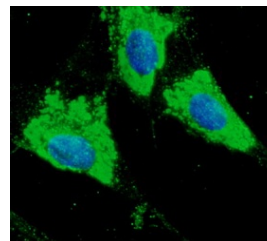
<b>Clonality</b>	Polyclonal
<b>Clone ID</b>	
<b>Concentration</b>	3 mg/mL
<b>Conjugation</b>	Unconjugated
<b>Purification</b>	This antibody is epitope-affinity purified from goat antiserum.
<b>Dilution</b>	WB 1:500-1:2000
<b>Range</b>	IF 1:50-1:500 IHC-P 1:200-1:1000 IHC-F 1:200-1:1000
<b>Formulation</b>	PBS, 20% Glycerol and 0.05% Sodium Azide.
<b>Isotype</b>	IgG
<b>Storage Instruction</b>	Store at -20 C for long-term storage. Store at 2-8 C for up to one month.

### TARGET INFORMATION

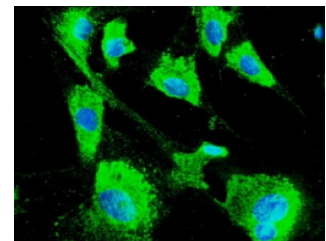
<b>Gene ID</b>	2923
<b>Gene Symbol</b>	PDIA3
<b>Uniprot ID</b>	PDIA3_HUMAN
<b>Immunogen</b>	Recombinant peptide derived from within residues 300 aa to the C-terminus of human ERp57 produced in E. coli.
<b>Immunogen Region</b>	300aa C-Term
<b>Specificity</b>	Detects a band of 60 kDa by Western blot in the following canine, human, monkey, mouse, rat whole cell lysates.
<b>Immunogen Sequence</b>	STAGEIPVVAIRTAKEKGV MQEEFSRDGKALERFLQDYF DGNLKRYLKSEPIPESNDGP VKVVVAENFDEIVNNENKDV LIEFYAPWCGHCKNLEPKYK ELGEKLSKDPNIVIAKMDAT ANDVSPPYEVRGFPTIYFSP ANKKLNPKKYEGGRELSDFI SYLQREATNPPVIEEKPKK KKKAQEDL



Immunofluorescence à anti-ERP57 antibody in primary RPE cells at 1:100 dilution; cells were fixed with 4% of PFA



Immunofluorescence à anti-ERP57 antibody in primary RPE cells at 1:100 dilution; cells were fixed with 4% of PFA



Immunofluorescence à anti-ERP57 antibody in primary RPE cells at 1:100 dilution; cells were fixed with 4% of PFA

This product is suitable for in-vitro studies under the RESEARCH USE ONLY [RUO] licence. This product must not be used as for diagnostic or other medical purposes.  
St John's Laboratory Ltd, Knowledge Dock Business Centre, University Way, London, E16 2RD | Tel: 0208 223 3081