

Anti-CDH2 antibody (850aa to C-Term) (STJ140028)

STJ140028

GENERAL INFORMATION

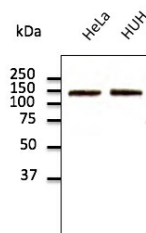
Product Type	Primary antibodies
Short Description	Goat polyclonal antibody anti-N-Cadherin (850aa to C-Term) is suitable for use in Western Blot and Immunofluorescence research applications.
Applications	WB/IF
Host/Source	Goat
Reactivity	Human/Rat/Mouse/Monkey/Canine

PRODUCT PROPERTIES

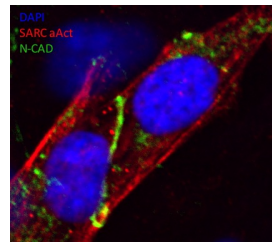
Clonality	Polyclonal
Clone ID	
Concentration	3 mg/mL
Conjugation	Unconjugated
Purification	This antibody is epitope-affinity purified from goat antiserum.
Dilution Range	WB 1:500-1:2000 IF 1:25-1:250
Formulation	PBS, 20% Glycerol and 0.05% Sodium Azide.
Isotype	IgG
Storage	For continuous use, store at 2-8 C for one-two days. For extended storage, store in -20 C freezer. Working dilution samples should be discarded if not used within 12 hours.
Instruction	

TARGET INFORMATION

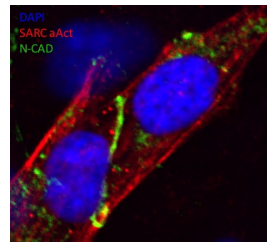
Gene ID	1000
Gene Symbol	CDH2
Uniprot ID	CADH2_HUMAN
Immunogen	Purified recombinant peptide derived from within residues 850 aa to C-terminus of human CDH2 produced in E. coli.
Immunogen Region	850aa to C-Term
Specificity	Detects endogenous levels of total N-cadherin protein by Western blot in the whole cell lysates (COS-7, HeLa, HUH and Hepa-6).
Immunogen Sequence	



Endogenous CDH2 detected with at 1:500 dilution lysates at 100 µg per lane and rabbit polyclonal to goat IgG (HRP) at 1:10000 dilution.



N-Cadherin antibody marking the intercalated disks (distal cell junctions in heart tissue a green line in the middle) of Human iPS-derived cardiomyocytes. Methanol fixation DAPI: DNA (nuclear) stain, SARC aAct: Sarcomeric a-Actinin, N-CAD: N-Cadherin. This image is courtesy of Dr Zanella F (University of California)



N-Cadherin antibody marking the intercalated disks (distal cell junctions in heart tissue a green line in the middle) of Human iPS-derived cardiomyocytes. Methanol fixation DAPI: DNA (nuclear) stain, SARC aAct: Sarcomeric a-Actinin, N-CAD: N-Cadherin.

This product is suitable for in-vitro studies under the RESEARCH USE ONLY [RUO] licence. This product must not be used as for diagnostic or other medical purposes.
St John's Laboratory Ltd, Knowledge Dock Business Centre, University Way, London, E16 2RD | Tel: 0208 223 3081