

Anti-CTSD antibody (275aa C-Term) (STJ140018)

STJ140018

GENERAL INFORMATION

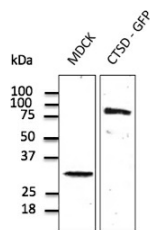
Product Type	Primary antibodies
Short Description	Goat polyclonal antibody anti-Cathepsin D (275aa C-Term) is suitable for use in Western Blot, Immunohistochemistry, Immunofluorescence and Immune Electron Microscopy research applications.
Applications	WB/IHC-F/IHC-P/IF/IEM
Host/Source	Goat
Reactivity	Human/Rat/Mouse/Monkey/Canine

PRODUCT PROPERTIES

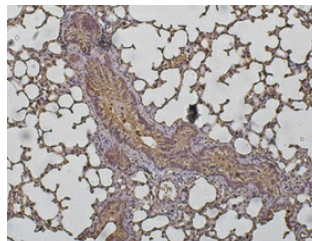
Clonality	Polyclonal
Clone ID	
Concentration	3 mg/mL
Conjugation	Unconjugated
Purification	This antibody is epitope-affinity purified from goat antiserum.
Dilution Range	WB 1:250-1:1000 IF 1:50-1:200 IHC-P 1:200-1:1000 IHC-F 1:200-1:1000 IEM 1:50-1:200 Romagnoli M Bresson L Di-Cicco A et al. Development 2020 Jan. PMID: 31988184 Pelkonen L Sato K Reinisalo M et al. Mol Pharm 2017 Mar. PMID: 281
Formulation	PBS, 20% Glycerol and 0.05% Sodium Azide.
Isotype	IgG
Storage	For continuous use, store at 2-8 C for one-two days. For extended storage, store in -20 C freezer. Working dilution samples should be discarded if not used within 12 hours.
Instruction	

TARGET INFORMATION

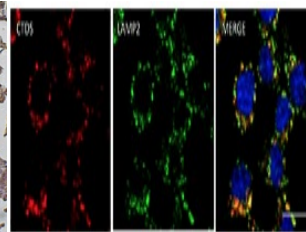
Gene ID	1509
Gene Symbol	CTSD
Uniprot ID	CATD_HUMAN
Immunogen	Purified recombinant peptide derived from within residues 275 aa to the C-terminus of human Cathepsin D produced in E. coli.
Immunogen Region	275aa C-Term
Specificity	This antibody gives a positive signal in the following human (Jurkat, HT1080, HUH, MDA-MB-231, ARPE19, SH-SY5Y) , canine (MDCK) and monkey (COS-7) whole cell lysates.
Immunogen Sequence	DQVEVASGLTLCKEGCEAIV DTGTSMLVGPVDEVRELQKA IGAVPLIQGEYMIPCEKVST LPAITLKLGGKGYKLSPEDEY TLKVSQAGKTLCLSGFMGMD IPPPSGPLWILGDVFIGRYY TVFDRDNNRVGF AEAAARL



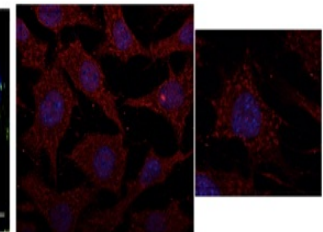
Anti-CTSD antibody at 1:500 dilution; endogenous CTSD (100 μ g per lane) and transfected 293FT cell lysate (at 30 μ g per lane) ; rabbit polyclonal to goat IgG (HRP) at 1:10000 dilution



Immunoperoxidase of polyclonal antibody to CTSD (1:200) on paraformaldehyde-fixed paraffin-embedded mouse lung



Immunofluorescence à anti-CTSD antibody at 1:100 dilution in RAW264.7 cells; cells were fixed with PFA and permeabilized with 0.05% saponin



Immunofluorescence à anti-CTSD antibody at 1:100 dilution in NIH:3T3 cells; cells were fixed with methanol and permeabilized with 0.1% saponin

This product is suitable for in-vitro studies under the RESEARCH USE ONLY [RUO] licence. This product must not be used as for diagnostic or other medical purposes.
St John's Laboratory Ltd, Knowledge Dock Business Centre, University Way, London, E16 2RD | Tel: 0208 223 3081