

Anti-CANX antibody (550aa C-Term) (STJ140016)

STJ140016

GENERAL INFORMATION

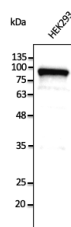
Product Type	Primary antibodies
Short Description	Goat polyclonal antibody anti-Calnexin (550aa C-Term) is suitable for use in Western Blot, Immunohistochemistry and Immunofluorescence research applications.
Applications	WB/IHC-F/IHC-P/IF
Host/Source	Goat
Reactivity	Human/Rat/Mouse/Monkey/Canine

PRODUCT PROPERTIES

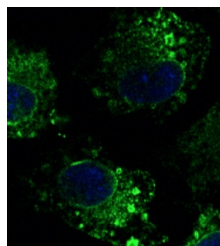
Clonality	Polyclonal
Clone ID	
Concentration	2 mg/mL
Conjugation	Unconjugated
Purification	This antibody is epitope-affinity purified from goat antiserum.
Dilution Range	WB 1:500-1:5000 IF 1:50-1:500 IHC-P 1:200-1:1000 IHC-F 1:200-1:1000 Martins-Marques T Costa MC Catarino S et al. EMBO Rep 2022 May PMID: 35593040 Sacramento JF Olea E Ribeiro MJ et al. J Physiol 2019 Aug. PMID: 31426127 Ribot
Formulation	PBS, 20% Glycerol and 0.05% Sodium Azide.
Isotype	IgG
Storage	For continuous use, store at 2-8 C for one-two days. For extended storage, store in -20 C freezer. Working dilution samples should be discarded if not used within 12 hours.
Instruction	

TARGET INFORMATION

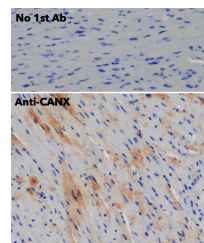
Gene ID	821
Gene Symbol	CANX
Uniprot ID	CALX_HUMAN
Immunogen	Purified recombinant peptide within residues 550 aa to the C-terminus of human CANX produced in E. coli.
Immunogen Region	550aa C-Term
Specificity	Detects a band of 90 kDa by Western blot in the following human (293A, primary fibroblasts, HaCat, HeLa, HMEC-1, Jurkat, MNT1, U-118, rat (TR-iBRB) , mouse (3T3, AtT-20, Hepa, Raw264.7) , monkey (COS-7) and canine (D17) whole cell lysates.
Immunogen Sequence	EFKSDAEEDGGTVSQEEEDR KPKAEEDEILNRSPPNRKPR RE



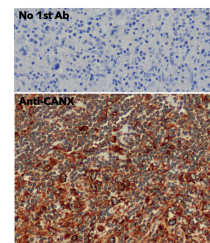
Anti-CANX antibody at 1:2500 dilution; lysates at 50 µg per lane; rabbit polyclonal to goat IgG (HRP) at 1:10000 dilution



Immunofluorescence à anti-CANX antibody in Hepa1-6 cells at 1:100 dilution; cells were fixed with 4% of PFA



Immunohistochemistry of human heart using anti-CANX antibody and FFPE tissue after heat-induced antigen retrieval. Anti-CANX antibody at 1:750/DAB detection.



Immunohistochemistry of human lymph node using anti-CANX antibody and FFPE tissue after heat-induced antigen retrieval. Anti-CANX antibody at 1:750/DAB detection.

This product is suitable for in-vitro studies under the RESEARCH USE ONLY [RUO] licence. This product must not be used as for diagnostic or other medical purposes.
St John's Laboratory Ltd, Knowledge Dock Business Centre, University Way, London, E16 2RD | Tel: 0208 223 3081