

Anti-VPS45A antibody (STJ13100462)

STJ13100462

GENERAL INFORMATION

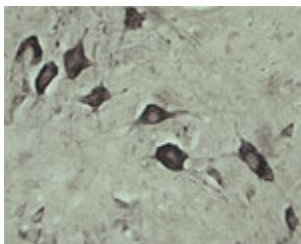
Product Type	Primary antibodies
Short Description	Rabbit polyclonal antibody anti-VPS45A is suitable for use in Immunohistochemistry and Western Blot research applications.
Applications	IHC/WB
Host/Source	Rabbit
Reactivity	Rat/Mouse

PRODUCT PROPERTIES

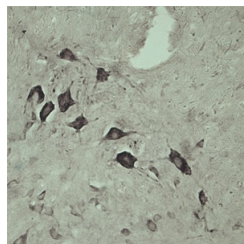
Clonality	Polyclonal
Clone ID	
Concentration	
Conjugation	Unconjugated
Purification	IgG purified
Dilution Range	IHC, WB. A concentration of 10-50 µg/ml is recommended. The optimal concentration should be determined by the end user.
Formulation	Lyophilised
Isotype	IgG
Storage	Maintain the lyophilised/reconstituted antibodies frozen at -20°C for long term storage and refrigerated at 2-8°C for a shorter term.
Instruction	When reconstituting, Glycerol (1:1) may be added for an additional stability. Avoid freeze and thaw cycles.

TARGET INFORMATION

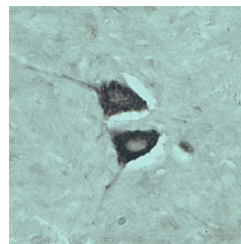
Gene ID	64516
Gene Symbol	Vps45
Uniprot ID	VPS45_RAT
Immunogen	A synthetic peptide from rat VPS45A conjugated to an immunogenic carrier protein was used as the antigen. The peptide is homologous with the corresponding sequence in mouse.
Immunogen Region	
Specificity	Specific for VPS45.
Immunogen Sequence	



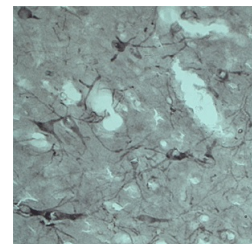
IHC on rat spinal cord using Rabbit antibody to VPS45A (STJ13100462) at a concentration of 10 µg/ml. Pre-absorption of the antibody with the immunising peptide completely abolishes the immunostaining (not shown).



IHC on rat spinal cord using Rabbit antibody to VPS45A (STJ13100462) at a concentration of 10 µg/ml. Pre-absorption of the antibody with the immunising peptide completely abolishes the immunostaining (not shown).



IHC on rat spinal cord using Rabbit antibody to VPS45A (STJ13100462) at a concentration of 10 µg/ml. Pre-absorption of the antibody with the immunising peptide completely abolishes the immunostaining (not shown).



IHC on rat brain using Rabbit antibody to VPS45A (STJ13100462) at a concentration of 10 µg/ml. Pre-absorption of the antibody with the immunising peptide completely abolishes the immunostaining (not shown).

This product is suitable for in-vitro studies under the RESEARCH USE ONLY [RUO] licence. This product must not be used as for diagnostic or other medical purposes.
St John's Laboratory Ltd, Knowledge Dock Business Centre, University Way, London, E16 2RD | Tel: 0208 223 3081