

Anti-GAPDH antibody (C-Term) (STJ13100141)

STJ13100141

GENERAL INFORMATION

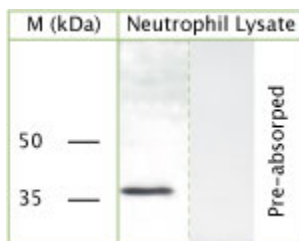
Product Type	Primary antibodies
Short Description	Sheep polyclonal antibody anti-GAPDH (C-Term) is suitable for use in Immunohistochemistry and Western Blot research applications.
Applications	IHC/WB
Host/Source	Sheep
Reactivity	Rat/Mouse/Human

PRODUCT PROPERTIES

Clonality	Polyclonal
Clone ID	
Concentration	
Conjugation	Unconjugated
Purification	IgG purified
Dilution Range	IHC, WB. A concentration of 10-50 µg/ml is recommended. The optimal concentration should be determined by the end user. Not yet tested in other applications.
Formulation	Lyophilised
Isotype	IgG
Storage	Maintain the lyophilised/reconstituted antibodies frozen at -20°C for long term storage and refrigerated at 2-8°C for a shorter term.
Instruction	When reconstituting, Glycerol (1:1) may be added for an additional stability. Avoid freeze and thaw cycles.

TARGET INFORMATION

Gene ID	2597
Gene Symbol	GAPDH
Uniprot ID	G3P_HUMAN
Immunogen	A synthetic peptide from c-terminal of rat GAPDH conjugated to blue carrier protein was used as the antigen. The antigen is homologous in mouse and shares 90% identity with human sequence.
Immunogen Region	C-Term
Specificity	Specific for GAPDH.
Immunogen Sequence	



WB on human neutrophil lysate using Sheep antibody to c-terminal of GAPDH (STJ13100141) at a concentration of 20 µg/ml.

This product is suitable for in-vitro studies under the RESEARCH USE ONLY [RUO] licence. This product must not be used as for diagnostic or other medical purposes.
St John's Laboratory Ltd, Knowledge Dock Business Centre, University Way, London, E16 2RD | Tel: 0208 223 3081