

Anti-PSME3 antibody (200-254) (STJ119994)

STJ119994

GENERAL INFORMATION

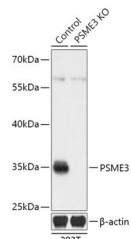
Product Type	Primary antibodies
Short Description	
Applications	WB/IHC-P/IF/ICC/ELISA
Host/Source	Rabbit
Reactivity	Human/Mouse/Rat

PRODUCT PROPERTIES

Clonality	Polyclonal
Clone ID	
Concentration	Lot specific
Conjugation	Unconjugated
Purification	Affinity purification
Dilution Range	WB:1:1000-1:2000 IHC-P:1:50-1:200 IF/ICC:1:50-1:200 ELISA:Recommended starting concentration is 1 µg/mL. Please optimize the concentration based on your specific assay requirements.
Formulation	PBS with 0.01% Thimerosal, 50% Glycerol, pH 7.3.
Isotype	IgG
Storage Instruction	Store at -20°C for up to 1 year from the date of receipt, and avoid repeat freeze-thaw cycles.

TARGET INFORMATION

Gene ID	10197
Gene Symbol	PSME3
Uniprot ID	PSME3_HUMAN
Immunogen	
Immunogen Region	200-254
Specificity	A synthetic peptide corresponding to a sequence within amino acids 200-254 of human PSME3 (NP_005780.2).
Immunogen Sequence	EDYRRTVTEIDEKEYISLRL IISLRNQYVTLHDMILKNI EKIKRPRSSNAETLY



Western blot analysis of lysates from wild type (WT) and PSME3 knockout (KO) 293T cells, using [KO Validated] PSME3 Rabbit polyclonal antibody (STJ119994) at 1:3000 dilution. Secondary antibody: HRP Goat Anti-Rabbit IgG (H+L) (STJSD00856) at 1:10000 dilution. Lysates/proteins: 25 µg per lane. Blocking buffer: 3% nonfat dry milk in TBST. Detection: ECL Basic Kit. Exposure time: 3min.

This product is suitable for in-vitro studies under the RESEARCH USE ONLY [RUO] licence. This product must not be used as for diagnostic or other medical purposes.
St John's Laboratory Ltd, Knowledge Dock Business Centre, University Way, London, E16 2RD | Tel: 0208 223 3081