

Anti-AKT2 antibody (381-481) (STJ119992)

STJ119992

GENERAL INFORMATION

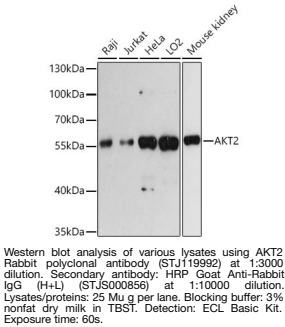
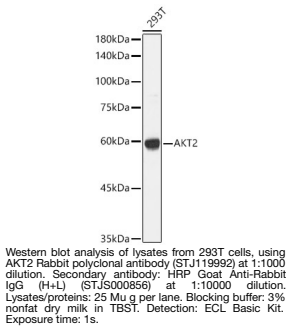
Product Type	Primary antibodies
Short Description	
Applications	WB/ELISA
Host/Source	Rabbit
Reactivity	Human/Mouse

PRODUCT PROPERTIES

Clonality	Polyclonal
Clone ID	
Concentration	Lot specific
Conjugation	Unconjugated
Purification	Affinity purification
Dilution Range	WB:1:1000-1:5000 ELISA:Recommended starting concentration is 1 Mu g/mL. Please optimize the concentration based on your specific assay requirements.
Formulation	PBS with 0.01% Thimerosal, 50% Glycerol, pH 7.3.
Isotype	IgG
Storage	Store at -20°C for up to 1 year from the date of receipt, and avoid repeat freeze-thaw cycles.
Instruction	

TARGET INFORMATION

Gene ID	208
Gene Symbol	AKT2
Uniprot ID	AKT2_HUMAN
Immunogen	
Immunogen	381-481
Region	
Specificity	A synthetic peptide corresponding to a sequence within amino acids 381-481 of human AKT2 (NP_001617.1).
Immunogen	LAGLLKKDKPKQRLGGGPSDA KEVMEHRFFLSINWQDVVQK KLLPPFKPQVTSEVDTRYFD DEFTAQSITITPPDRYDSL
Sequence	LLELDQRTHFPQFSYASIR E



This product is suitable for in-vitro studies under the RESEARCH USE ONLY [RUO] licence. This product must not be used as for diagnostic or other medical purposes.
St John's Laboratory Ltd, Knowledge Dock Business Centre, University Way, London, E16 2RD | Tel: 0208 223 3081