

Anti-NME1 antibody (10-110) (STJ119972)

STJ119972

GENERAL INFORMATION

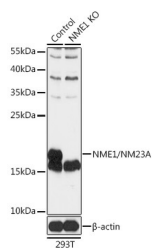
Product Type	Primary antibodies
Short Description	
Applications	WB/IF/ICC/ELISA
Host/Source	Rabbit
Reactivity	Human/Mouse/Rat

PRODUCT PROPERTIES

Clonality	Polyclonal
Clone ID	
Concentration	Lot specific
Conjugation	Unconjugated
Purification	Affinity purification
Dilution Range	WB:1:500-1:2000 IF/ICC:1:50-1:200 ELISA:Recommended starting concentration is 1 Mu g/mL. Please optimize the concentration based on your specific assay requirements.
Formulation	PBS with 0.01% Thimerosal, 50% Glycerol, pH 7.3.
Isotype	IgG
Storage	Store at -20°C for up to 1 year from the date of receipt, and avoid repeat freeze-thaw cycles.
Instruction	

TARGET INFORMATION

Gene ID	4830
Gene Symbol	NME1
Uniprot ID	NDKA_HUMAN
Immunogen	
Immunogen Region	10-110
Specificity	A synthetic peptide corresponding to a sequence within amino acids 10-110 of human NME1/NM23A (NP_000260.1). AIKPDGVQRGLVGEIIRFE QKGFRLVGLKFMQASEDLLK EHYVDLKDRPFFAGLVKYMHS GPPVAMVWEGLNVVKTGRV
Immunogen Sequence	MLGETNPADSKPGTIRGDFC I



Western blot analysis of lysates from wild type (WT) and NME1/NM23A knockout (KO) 293T cells, using [KO Validated] NME1/NM23A Rabbit polyclonal antibody (STJ119972) at 1:1000 dilution. Secondary antibody: HRP Goat Anti-Rabbit IgG (H+L) (STJ5000856) at 1:10000 dilution. Lysates/proteins: 25 Mu g per lane. Blocking buffer: 3% nonfat dry milk in TBST. Detection: ECL Basic Kit. Exposure time: 5s.

This product is suitable for in-vitro studies under the RESEARCH USE ONLY [RUO] licence. This product must not be used as for diagnostic or other medical purposes.
St John's Laboratory Ltd, Knowledge Dock Business Centre, University Way, London, E16 2RD | Tel: 0208 223 3081