

**Anti-SEN2 antibody (366-589) (STJ119967)**  
STJ119967

**GENERAL INFORMATION**

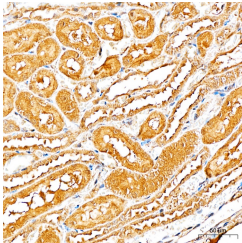
<b>Product Type</b>	Primary antibodies
<b>Short Description</b>	
<b>Applications</b>	WB/IHC-P/ELISA
<b>Host/Source</b>	Rabbit
<b>Reactivity</b>	Human/Mouse/Rat

**PRODUCT PROPERTIES**

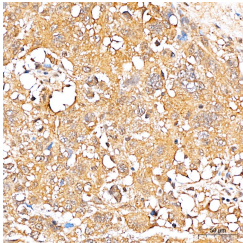
<b>Clonality</b>	Polyclonal
<b>Clone ID</b>	
<b>Concentration</b>	Lot specific
<b>Conjugation</b>	Unconjugated
<b>Purification</b>	Affinity purification
<b>Dilution Range</b>	WB:1:500-1:2000 IHC-P:1:50-1:200 ELISA:Recommended starting concentration is 1 $\mu$ g/mL. Please optimize the concentration based on your specific assay requirements.
<b>Formulation</b>	PBS with 0.05% Proclin300, 50% Glycerol, pH 7.3.
<b>Isotype</b>	IgG
<b>Storage Instruction</b>	Store at -20°C for up to 1 year from the date of receipt, and avoid repeat freeze-thaw cycles.

**TARGET INFORMATION**

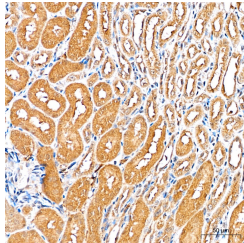
<b>Gene ID</b>	59343
<b>Gene Symbol</b>	SEN2
<b>Uniprot ID</b>	SEN2_HUMAN
<b>Immunogen</b>	
<b>Immunogen Region</b>	366-589
<b>Specificity</b>	Recombinant fusion protein containing a sequence corresponding to amino acids 366-589 of human SEN2 (NP_067640.2).
<b>Immunogen Sequence</b>	LELTEDMEKISNALGHGPQ DEILSSAFKLRI TRGDIQTL KNYHWLNDEVINFYMNLLVE RNKKQGYPALHVFSTFFYPK LKSGGYQAVKRWTKGVNLFQ QEILVPIHRKVHWSLVVID LRKCKLYLDSMGQKGHRIC EILLQYLQDESKTKRNSDLN LLEWTHHSMKPEIPQQLNG SDCGMFTCKYADYISRDKPI TFTQHQMPLFRKKMWWEILH QQLL



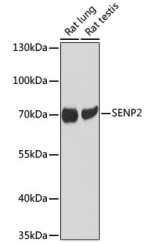
Immunohistochemistry analysis of paraffin-embedded Rat kidney tissue using SEN2 Rabbit polyclonal antibody (STJ119967) at a dilution of 1:100 (40x lens). High pressure antigen retrieval performed with 0.01M Citrate Buffer (pH 6.0) prior to immunohistochemistry staining.



Immunohistochemistry analysis of paraffin-embedded Human lung cancer tissue using SEN2 Rabbit polyclonal antibody (STJ119967) at a dilution of 1:100 (40x lens). High pressure antigen retrieval performed with 0.01M Citrate Buffer (pH 6.0) prior to immunohistochemistry staining.



Immunohistochemistry analysis of paraffin-embedded Mouse kidney tissue using SEN2 Rabbit polyclonal antibody (STJ119967) at a dilution of 1:100 (40x lens). High pressure antigen retrieval performed with 0.01M Citrate Buffer (pH 6.0) prior to immunohistochemistry staining.



Western blot analysis of various lysates, using SEN2 Rabbit polyclonal antibody (STJ119967) at 1:1000 dilution. Secondary antibody: HRP Goat Anti-Rabbit IgG (H+L) (STJ5000856) at 1:10000 dilution. Lysates/proteins: 25  $\mu$ g per lane. Blocking buffer: 3% nonfat dry milk in TBST. Detection: ECL Basic Kit. Exposure time: 90s.

This product is suitable for in-vitro studies under the RESEARCH USE ONLY [RUO] licence. This product must not be used as for diagnostic or other medical purposes.  
St John's Laboratory Ltd, Knowledge Dock Business Centre, University Way, London, E16 2RD | Tel: 0208 223 3081