

Anti-MT-ND6 antibody (134-150) (STJ119965)
STJ119965

GENERAL INFORMATION

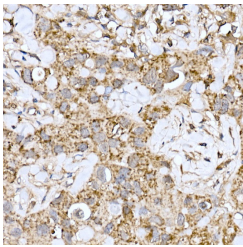
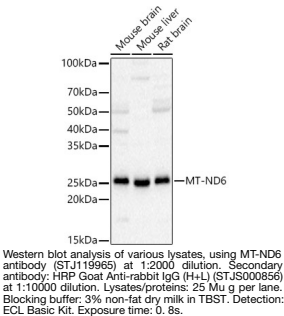
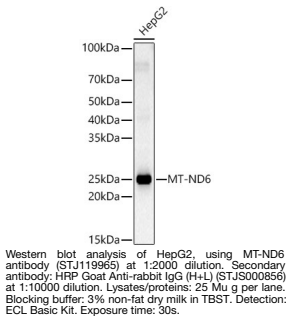
Product Type	Primary antibodies
Short Description	
Applications	WB/IHC-P/ELISA
Host/Source	Rabbit
Reactivity	Human/Mouse/Rat

PRODUCT PROPERTIES

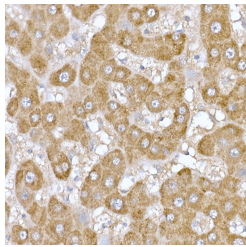
Clonality	Polyclonal
Clone ID	
Concentration	Lot specific
Conjugation	Unconjugated
Purification	Affinity purification
Dilution Range	WB:1:1000-1:5000 IHC-P:1:50-1:200 ELISA:Recommended starting concentration is 1 Mu g/mL. Please optimize the concentration based on your specific assay requirements.
Formulation	PBS with 0.09% Sodium Azide, 50% Glycerol, pH 7.3.
Isotype	IgG
Storage Instruction	Store at -20°C for up to 1 year from the date of receipt, and avoid repeat freeze-thaw cycles.

TARGET INFORMATION

Gene ID	4541
Gene Symbol	MT-ND6
Uniprot ID	NU6M_HUMAN
Immunogen	
Immunogen Region	134-150
Specificity	A synthetic peptide corresponding to a sequence within amino acids 80-174 of human MT-ND6 (YP_003024037.1).
Immunogen Sequence	EAWGSGVEVLVSVLVGLAME VGLVLWVKEYDGVVVVNFN SVGSWMIYEGEGSLIREDP IGAGALYDYGRLVWVTGWT LFVGVYVIEIARGN



Immunohistochemistry analysis of paraffin-embedded human breast cancer using MT-ND6 antibody (STJ119965) at dilution of 1:100 (40x lens). Perform high pressure antigen retrieval with 10 mM citrate buffer pH 6. 0 before commencing with immunohistochemistry staining protocol.



Immunohistochemistry analysis of paraffin-embedded human liver using MT-ND6 antibody (STJ119965) at dilution of 1:100 (40x lens). Perform high pressure antigen retrieval with 10 mM citrate buffer pH 6. 0 before commencing with immunohistochemistry staining protocol.