

## Anti-DUSP8 antibody (1-14) (STJ119964)

STJ119964

### GENERAL INFORMATION

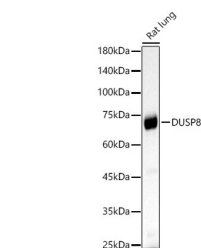
<b>Product Type</b>	Primary antibodies
<b>Short Description</b>	
<b>Applications</b>	WB/IF/ICC/ELISA
<b>Host/Source</b>	Rabbit
<b>Reactivity</b>	Human/Mouse/Rat

### PRODUCT PROPERTIES

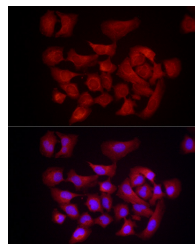
<b>Clonality</b>	Polyclonal
<b>Clone ID</b>	
<b>Concentration</b>	Lot specific
<b>Conjugation</b>	Unconjugated
<b>Purification</b>	Affinity purification
<b>Dilution Range</b>	WB:1:1000-1:5000 IF/ICC:1:500-1:1000 ELISA:Recommended starting concentration is 1 µg/mL. Please optimize the concentration based on your specific assay requirements.
<b>Formulation</b>	PBS with 0.05% Proclin300, 50% Glycerol, pH 7.3.
<b>Isotype</b>	IgG
<b>Storage</b>	Store at -20°C for up to 1 year from the date of receipt, and avoid repeat freeze-thaw cycles.
<b>Instruction</b>	

### TARGET INFORMATION

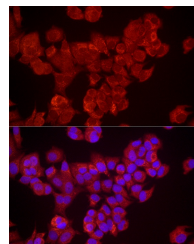
<b>Gene ID</b>	1850
<b>Gene Symbol</b>	DUSP8
<b>Uniprot ID</b>	DUS8_HUMAN
<b>Immunogen</b>	
<b>Immunogen Region</b>	1-14
<b>Specificity</b>	A synthetic peptide corresponding to a sequence within amino acids 1-100 of human DUSP8 (NP_004411.2).
<b>Immunogen Sequence</b>	MAGDRLPRKVM DAKKLASLL RGGPGGPLVIDSR SFVEYNS WHVLSVNICCSKLVKRRLLQ QGKV TIAELIQPAARSQVEA TEPQDVVVYDQSTRDASVLA



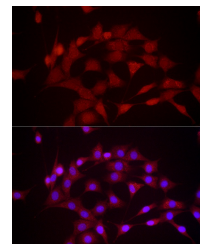
Western blot analysis of Rat lung, using DUSP8 rabbit polyclonal antibody (STJ119964) at 1:2000 dilution. Secondary antibody: HRP Goat Anti-rabbit IgG (H+L) (STJ5000856) at 1:10000 dilution. Lysates/proteins: 25 µg per lane. Blocking buffer: 3% non-fat dry milk in TBST. Detection: ECL Basic Kit. Exposure time: 60s.



Immunofluorescence analysis of HeLa cells using DUSP8 rabbit polyclonal antibody (STJ119964) at dilution of 1:1000 (40x lens). Blue: DAPI for nuclear staining.



Immunofluorescence analysis of MCF7 cells using DUSP8 rabbit polyclonal antibody (STJ119964) at dilution of 1:1000 (40x lens). Blue: DAPI for nuclear staining.



Immunofluorescence analysis of NIH/3T3 cells using DUSP8 rabbit polyclonal antibody (STJ119964) at dilution of 1:1000 (40x lens). Blue: DAPI for nuclear staining.