

Anti-POU1F1 antibody (124-273) (STJ119954)
STJ119954

GENERAL INFORMATION

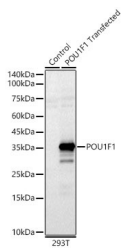
Product Type	Primary antibodies
Short Description	
Applications	WB/ELISA
Host/Source	Rabbit
Reactivity	Human

PRODUCT PROPERTIES

Clonality	Polyclonal
Clone ID	
Concentration	Lot specific
Conjugation	Unconjugated
Purification	Affinity purification
Dilution	WB:1:100-1:500
Range	ELISA:Recommended starting concentration is 1 Mu g/mL. Please optimize the concentration based on your specific assay requirements.
Formulation	PBS with 0.05% Proclin300, 50% Glycerol, pH 7.3.
Isotype	IgG
Storage	Store at -20°C for up to 1 year from the date of receipt, and avoid repeat freeze-thaw cycles.
Instruction	

TARGET INFORMATION

Gene ID	5449
Gene Symbol	POU1F1
Uniprot ID	PIT1_HUMAN
Immunogen	
Immunogen Region	124-273
Specificity	Recombinant fusion protein containing a sequence corresponding to amino acids 124-273 of human POU1F1 (NP_000297.1?).
Immunogen Sequence	MDSPETIRELEKFNANFKVRR IKLGYTQTNVGEALAAVHGS EFSQTTICRFENLQLSFKNA CKLKAILSKWLEEAQVQAL YNEKVGANERKRKRRTTISI AAKDALERHFGEQNKPSQSE IMRMAEELNLEKEVVRVWFV NRRQREKRVK



Western blot analysis of lysates from wild type (WT) and 293T cells transfected with POU1F1 using POU1F1 Rabbit polyclonal antibody (STJ119954) at 1:400 dilution. Secondary antibody: HRP Goat Anti-Rabbit IgG (H+L) (STJ5000856) at 1:10000 dilution. Lysates/proteins: 25 Mu g per lane. Blocking buffer: 3% nonfat dry milk in TBST. Detection: ECL Basic Kit. Exposure time: 60s.

This product is suitable for in-vitro studies under the RESEARCH USE ONLY [RUO] licence. This product must not be used as for diagnostic or other medical purposes.
St John's Laboratory Ltd, Knowledge Dock Business Centre, University Way, London, E16 2RD | Tel: 0208 223 3081