

Anti-MT-CYB antibody (100-200) (STJ119945)
STJ119945

GENERAL INFORMATION

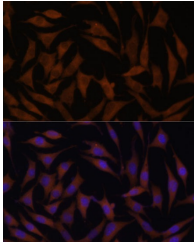
Product Type	Primary antibodies
Short Description	
Applications	WB/IHC-P/IF/ICC/ELISA
Host/Source	Rabbit
Reactivity	Human/Mouse/Rat

PRODUCT PROPERTIES

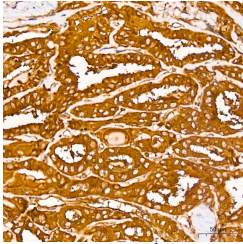
Clonality	Polyclonal
Clone ID	
Concentration	Lot specific
Conjugation	Unconjugated
Purification	Affinity purification
Dilution Range	WB:1:500-1:2000 IHC-P:1:50-1:200 IF/ICC:1:50-1:100 ELISA:Recommended starting concentration is 1 µg/mL. Please optimize the concentration based on your specific assay requirements.
Formulation	PBS with 0.05% Proclin300, 50% Glycerol, pH 7.3.
Isotype	IgG
Storage Instruction	Store at -20°C for up to 1 year from the date of receipt, and avoid repeat freeze-thaw cycles.

TARGET INFORMATION

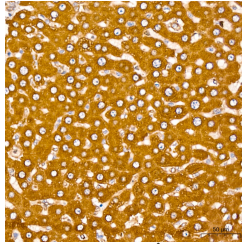
Gene ID	4519
Gene Symbol	MT-CYB
Uniprot ID	CYB_HUMAN
Immunogen	
Immunogen Region	100-200
Specificity	A synthetic peptide corresponding to a sequence within amino acids 100-200 of human MT-CYB (YP_003024038.1).
Immunogen Sequence	RGLYYGSFLYSETWNIGIIL LLATMATAFMGYLVPWQMS FWGATVITNLLSAIPYIGTD LVQWIWGGYSVDSPTLTRFF TFHFLPFIIAALTLHLF L



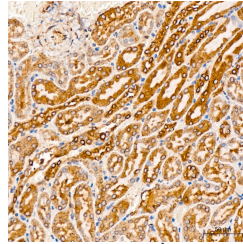
Immunofluorescence analysis of L929 cells using MT-CYB Rabbit polyclonal antibody (STJ119945) at dilution of 1:100 (40x lens). Secondary antibody: Cy3 Goat Anti-Rabbit IgG (H+L) at 1:500 dilution. Blue: DAPI for nuclear staining.



Immunohistochemistry analysis of human thyroid cancer tissue using MT-CYB Rabbit polyclonal antibody (STJ119945) at a dilution of 1:100 (40x lens). High pressure antigen retrieval was performed with 0.01 M citrate buffer (pH 6.0) prior to immunohistochemistry staining.



Immunohistochemistry analysis of rat liver tissue using MT-CYB Rabbit polyclonal antibody (STJ119945) at a dilution of 1:100 (40x lens). High pressure antigen retrieval was performed with 0.01 M citrate buffer (pH 6.0) prior to immunohistochemistry staining.



Immunohistochemistry analysis of mouse kidney tissue using MT-CYB Rabbit polyclonal antibody (STJ119945) at a dilution of 1:100 (40x lens). High pressure antigen retrieval was performed with 0.01 M citrate buffer (pH 6.0) prior to immunohistochemistry staining.

This product is suitable for in-vitro studies under the RESEARCH USE ONLY [RUO] licence. This product must not be used as for diagnostic or other medical purposes.
St John's Laboratory Ltd, Knowledge Dock Business Centre, University Way, London, E16 2RD | Tel: 0208 223 3081