

Anti-RELN antibody (50-3459) (STJ119920)

STJ119920

GENERAL INFORMATION

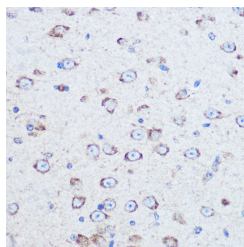
Product Type	Primary antibodies
Short Description	
Applications	WB/IHC-P/ELISA
Host/Source	Rabbit
Reactivity	Human/Mouse/Rat

PRODUCT PROPERTIES

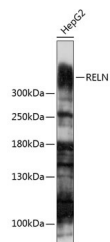
Clonality	Polyclonal
Clone ID	
Concentration	Lot specific
Conjugation	Unconjugated
Purification	Affinity purification
Dilution	WB:1:500-1:2000
Range	IHC-P:1:50-1:200 ELISA:Recommended starting concentration is 1 Mu g/mL. Please optimize the concentration based on your specific assay requirements.
Formulation	PBS with 0.05% Proclin300, 50% Glycerol, pH 7.3.
Isotype	IgG
Storage Instruction	Store at -20°C for up to 1 year from the date of receipt, and avoid repeat freeze-thaw cycles.

TARGET INFORMATION

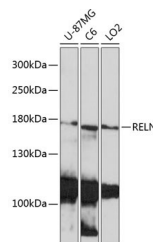
Gene ID	5649
Gene Symbol	RELN
Uniprot ID	RELN_HUMAN
Immunogen	
Immunogen Region	50-3459
Specificity	Recombinant fusion protein containing a sequence corresponding to amino acids 50-190 of human RELN (NP_005036.2).
Immunogen Sequence	KISTKNPDFLKDDFEGQLES DRFLMSGGKPSRKCGILSS GNNLFFNEDGLRMLMTRDL LSHARFVQFFMRLGCGKGV DP RSQP VLLQYSLNGGLSWS LLQEFLFSNSSNVGRYIALE IPLKARSGSTRLRWWQPSEN GHFYSPWVIDQLIGGNISG N



Immunohistochemistry analysis of paraffin-embedded mouse brain using RELN Rabbit polyclonal antibody (STJ119920) at dilution of 1:100 (40x lens). Perform microwave antigen retrieval with 10 mM Tris/EDTA buffer pH 9.0 before commencing with immunohistochemistry staining protocol.



Western blot analysis of extracts of HepG2 cells, using RELN Polyclonal Antibody (STJ119920) at 1:1000 dilution. Secondary antibody: HRP Goat Anti-Rabbit IgG (H+L) (STJS000856) at 1:10000 dilution. Lysates/proteins: 25 Mu g per lane. Blocking buffer: 3% nonfat dry milk in TBST. Detection: ECL Enhanced Kit. Exposure time: 3min.



Western blot analysis of extracts of various cell lines, using RELN Polyclonal Antibody (STJ119920) at 1:1000 dilution. Secondary antibody: HRP Goat Anti-Rabbit IgG (H+L) (STJS000856) at 1:10000 dilution. Lysates/proteins: 25 Mu g per lane. Blocking buffer: 3% nonfat dry milk in TBST. Detection: ECL Basic Kit. Exposure time: 3min.

This product is suitable for in-vitro studies under the RESEARCH USE ONLY [RUO] licence. This product must not be used as for diagnostic or other medical purposes.
St John's Laboratory Ltd, Knowledge Dock Business Centre, University Way, London, E16 2RD | Tel: 0208 223 3081