

Anti-PIGM antibody (35-96) (STJ119837)

STJ119837

GENERAL INFORMATION

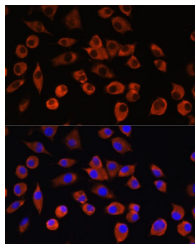
Product Type	Primary antibodies
Short Description	
Applications	WB/IHC-P/IF/ICC/ELISA
Host/Source	Rabbit
Reactivity	Human/Mouse/Rat

PRODUCT PROPERTIES

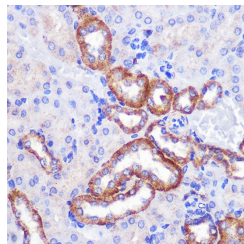
Clonality	Polyclonal
Clone ID	
Concentration	Lot specific
Conjugation	Unconjugated
Purification	Affinity purification
Dilution Range	WB:1:500-1:2000 IHC-P:1:50-1:200 IF/ICC:1:50-1:200 ELISA:Recommended starting concentration is 1 µg/mL. Please optimize the concentration based on your specific assay requirements.
Formulation	PBS with 0.01% Thimerosal, 50% Glycerol, pH 7.3.
Isotype	IgG
Storage Instruction	Store at -20°C for up to 1 year from the date of receipt, and avoid repeat freeze-thaw cycles.

TARGET INFORMATION

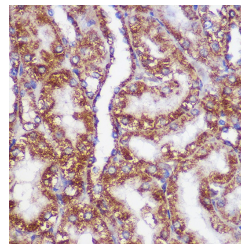
Gene ID	93183
Gene Symbol	PIGM
Uniprot ID	PIGM_HUMAN
Immunogen	
Immunogen Region	35-96
Specificity	Recombinant fusion protein containing a sequence corresponding to amino acids 35-96 of human PIGM (NP_660150.1).
Immunogen Sequence	YGVFQDRTLHVRYTDIDYQV FTDAARFVTEGRSPYLRTATY RYTPLLGWLLTPNIYLSLSEF GK



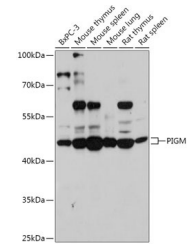
Immunofluorescence analysis of L929 cells using PIGM Rabbit polyclonal antibody (STJ119837) at dilution of 1:100. Secondary antibody: Cy3 Goat Anti-Rabbit IgG (H+L) at 1:500 dilution. Blue: DAPI for nuclear staining.



Immunohistochemistry analysis of PIGM in paraffin-embedded Mouse kidney using PIGM Rabbit polyclonal antibody (STJ119837) at dilution of 1:100 (40x lens). Perform microwave antigen retrieval with 10 mM PBS buffer pH 7.2 before commencing with immunohistochemistry staining protocol.



Immunohistochemistry analysis of PIGM in paraffin-embedded Rat kidney using PIGM Rabbit polyclonal antibody (STJ119837) at dilution of 1:100 (40x lens). Perform microwave antigen retrieval with 10 mM PBS buffer pH 7.2 before commencing with immunohistochemistry staining protocol.



Western blot analysis of various lysates using PIGM Rabbit polyclonal antibody (STJ119837) at 1:1000 dilution. Secondary antibody: HRP Goat Anti-Rabbit IgG (H+L) (STJS000896) at 1:10000 dilution. Lysates/proteins: 25 µg per lane. Blocking buffer: 3% nonfat dry milk in TBST. Detection: ECL Basic Kit. Exposure time: 120s.