

Anti-FAM155B antibody (400-472) (STJ119730)

STJ119730

GENERAL INFORMATION

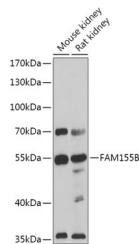
Product Type	Primary antibodies
Short Description	
Applications	WB/ELISA
Host/Source	Rabbit
Reactivity	Mouse/Rat

PRODUCT PROPERTIES

Clonality	Polyclonal
Clone ID	
Concentration	Lot specific
Conjugation	Unconjugated
Purification	Affinity purification
Dilution Range	WB:1:500-1:2000 ELISA:Recommended starting concentration is 1 µg/mL. Please optimize the concentration based on your specific assay requirements.
Formulation	PBS with 0.01% Thimerosal, 50% Glycerol, pH 7.3.
Isotype	IgG
Storage Instruction	Store at -20°C for up to 1 year from the date of receipt, and avoid repeat freeze-thaw cycles.

TARGET INFORMATION

Gene ID	27112
Gene Symbol	NALF2
Uniprot ID	NALF2_HUMAN
Immunogen	
Immunogen Region	400-472
Specificity	A synthetic peptide corresponding to a sequence within amino acids 400-472 of human FAM155B (NP_056501.2).
Immunogen Sequence	HYHPHHDPPGRVSNKPALLP VSGGSRLSPSRIRLCVLVLM LLHTVVSFSNNQGGGGLGLE TLPAL EEGLTREE



Western blot analysis of various lysates using FAM155B Rabbit polyclonal antibody (STJ119730) at 1:1000 dilution. Secondary antibody: HRP Goat Anti-Rabbit IgG (H+L) (STJS000856) at 1:10000 dilution. Lysates/proteins: 25 µg per lane. Blocking buffer: 3% nonfat dry milk in TBST. Detection: ECL Basic Kit. Exposure time: 90s.

This product is suitable for in-vitro studies under the RESEARCH USE ONLY [RUO] licence. This product must not be used as for diagnostic or other medical purposes.
St John's Laboratory Ltd, Knowledge Dock Business Centre, University Way, London, E16 2RD | Tel: 0208 223 3081